

# **MEITRACK GPS Tracking System MS03 User Guide**

## Change History

File Name	MEITRACK GPS Tracking System MS03 User Guide	Created By	Kyle Lv
Project	All products	Creation Date	2015-06-06
		Update Date	2016-02-24
Subproject	User Guide	Total Pages	46
Version	V1.0	Confidential	External Documentation

## Contents

1 Copyright and Disclaimer .....	5 -
2 System Overview .....	5 -
3 Functions Introduction .....	5 -
3.1 Function Modules .....	5 -
3.2 User-defined Interface .....	6 -
3.3 Icon Customization .....	7 -
3.4 Adding Unlimited Sub-Accounts .....	9 -
3.5 Status Display .....	9 -
3.6 Sending a Command .....	10 -
3.7 Tracker Information Display .....	11 -
3.8 Panel .....	11 -
3.9 Icon Functions .....	12 -
3.10 Unit per Year .....	12 -
4 Getting Started .....	12 -
4.1 Configuring Tracker's GPRS Parameters .....	12 -
4.1.1 Configured by Meitrack Manager .....	13 -
4.1.2 Configured by SMS Commands .....	13 -
4.2 Logging In to the MS03 .....	14 -
4.3 Adding a Tracker .....	14 -
4.4 Viewing the Latest Report .....	16 -
5 Management .....	16 -
5.1 Account and Device Management .....	16 -
5.1.1 Adding a Template .....	16 -
5.1.2 Adding a Sub-Account .....	17 -
5.1.3 Adding a Tracker .....	18 -
5.1.4 Adding Existing Account .....	18 -
5.1.5 Adding Existing Tracker .....	19 -
5.1.6 Deleting a Tracker .....	19 -
5.1.7 Modifying Tracker Information .....	19 -
5.1.8 Sending a Message .....	20 -
5.1.9 Searching a Sub-Account .....	21 -
5.1.10 Searching a Tracker .....	21 -
5.1.11 Transferring UY in Batches .....	22 -
5.2 Customization .....	22 -
5.2.1 Customizing an Event .....	22 -
5.2.2 Customizing Status .....	23 -
5.2.3 Customizing a Sensor .....	24 -
5.3 Setting a Temperature Sensor .....	25 -
5.4 Setting a Fuel Sensor .....	25 -
5.5 Setting a LED Display .....	26 -
5.6 Setting Tracker Parameters .....	26 -
5.7 Sending Commands in Batches .....	27 -

- 5.8 Polygon Geo-Fence Management ..... - 27 -
- 5.9 Polygon Geo-Fence Binding ..... - 29 -
- 5.10 Driver Information ..... - 30 -
- 5.11 RFID Card Management ..... - 30 -
- 5.12 Vehicle Information Management ..... - 31 -
- 5.13 Setting a Contact Mailbox ..... - 32 -
- 5.14 Online Upgrade ..... - 32 -
- 6 Reports ..... - 34 -
  - 6.1 Event Report ..... - 34 -
  - 6.2 Event Statistics ..... - 34 -
  - 6.3 Historical Data ..... - 35 -
  - 6.4 Speed Curve Chart ..... - 36 -
  - 6.5 Speed Pie Chart ..... - 36 -
  - 6.6 Parking Report ..... - 37 -
  - 6.7 Travel Report ..... - 37 -
  - 6.8 Mileage Statistics ..... - 37 -
  - 6.9 Sensor Report ..... - 38 -
  - 6.10 Average Analog ..... - 39 -
  - 6.11 I/O Status Report ..... - 39 -
  - 6.12 Driver I/O Status Report ..... - 40 -
  - 6.13 Photo Report ..... - 40 -
  - 6.14 LCD Display Uploading Info ..... - 41 -
  - 6.15 User Operation Record ..... - 41 -
  - 6.16 Vehicle Maintenance ..... - 42 -
  - 6.17 Statistics Report ..... - 42 -
  - 6.18 UY Transfer ..... - 42 -
- 7 Searching ..... - 43 -
  - 7.1 Latitude and Longitude Query ..... - 43 -
  - 7.2 Route Query ..... - 43 -
  - 7.3 POI Settings and Query ..... - 44 -
- 8 System Settings ..... - 45 -
  - 8.1 Common Settings ..... - 45 -
  - 8.2 Map Settings ..... - 46 -

# 1 Copyright and Disclaimer

Copyright © 2016 MEITRACK. All rights reserved.

and are trademarks that belong to Meitrack Group.

The user manual may be changed without notice.

Without prior written consent of Meitrack Group, this user manual, or any part thereof, may not be reproduced for any purpose whatsoever, or transmitted in any form, either electronically or mechanically, including photocopying and recording. Meitrack Group shall not be liable for direct, indirect, special, incidental, or consequential damages (including but not limited to economic losses, personal injuries, and loss of assets and property) caused by the use, inability, or illegality to use the product or documentation.

# 2 System Overview

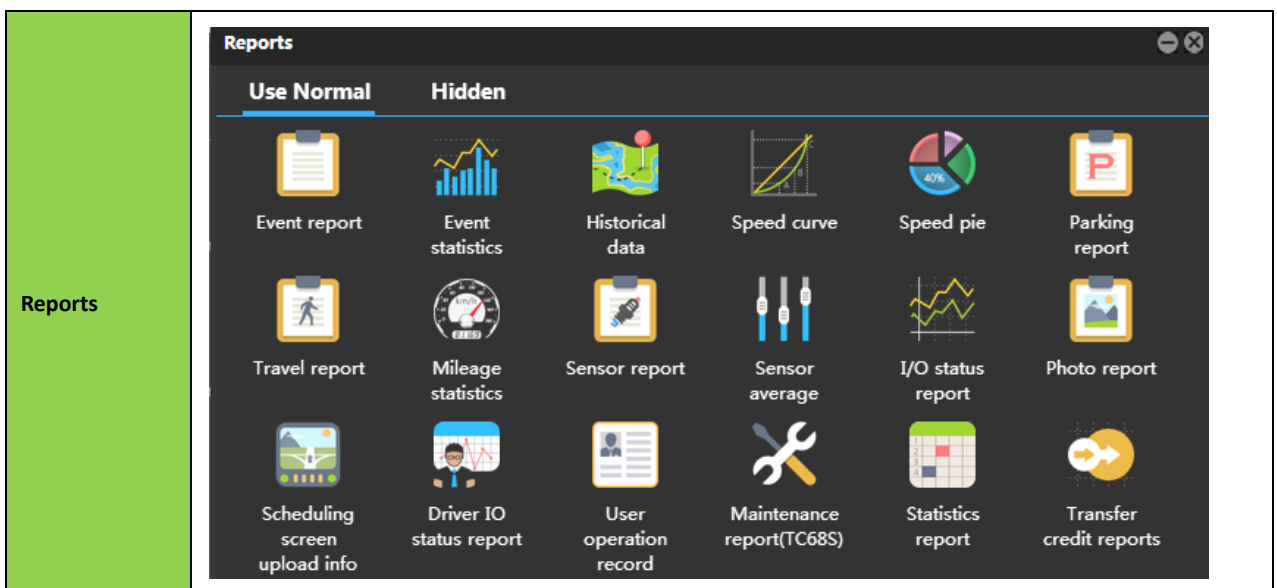
The MS03, third-generation Meitrack GPS Tracking System, is a server-based online positioning and tracking platform. You can monitor vehicles, people, and objects equipped with trackers in real time on web pages. This facilitates remote management.

The MS03 supports the following functions:

- Real-time location query
- Remote control by command
- Fleet management and personal uses
- Accounts' permission settings
- Driving and parking analysis report
- Mileage statistics
- Dispatching information settings

# 3 Functions Introduction

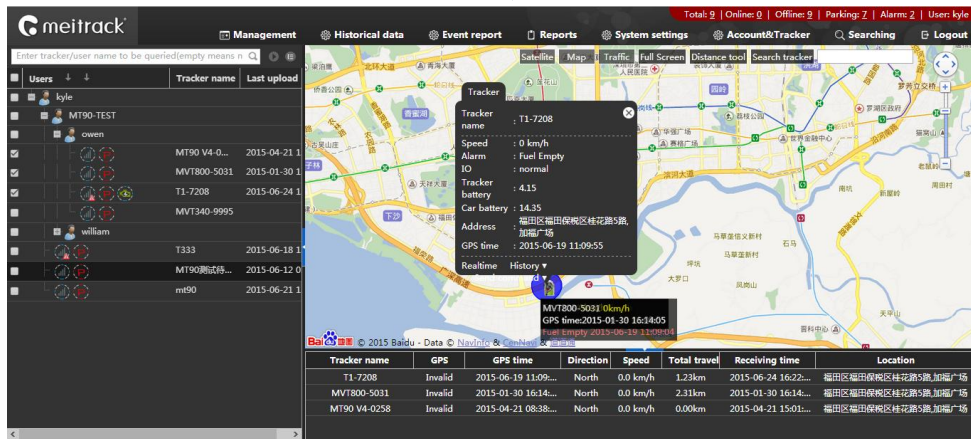
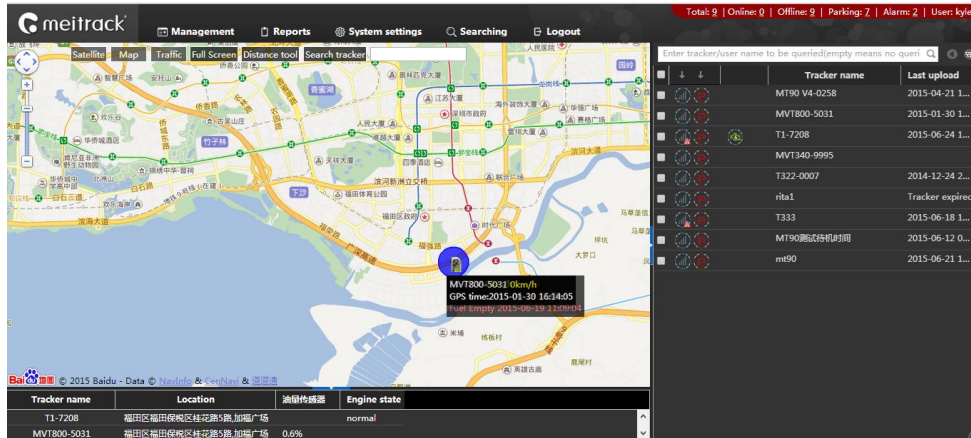
## 3.1 Function Modules



<b>Management</b>		
<b>Searching</b>		
<b>System settings</b>	Common settings	Map settings
<b>Logout</b>		

### 3.2 User-defined Interface

You can customize the main interface according to your preference.



### 3.3 Icon Customization

On the main interface, choose **Management**, **Searching**, or **Reports**.

On the window that is displayed, drag an icon to the main panel. At the same time, you can change its position on the main panel and delete it as required.

Figure 1: Main Panel



Figure 2: Drag the icon to the main panel

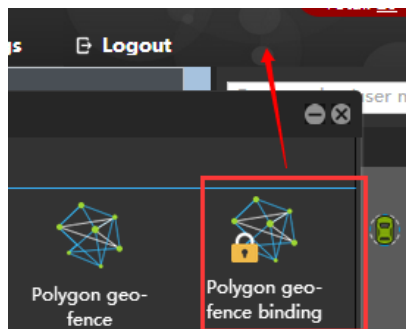


Figure 3: Shown on the main panel

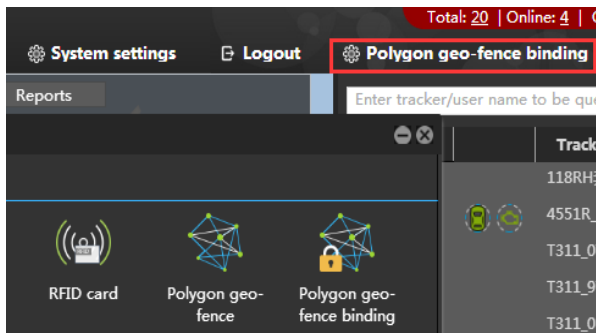


Figure 4: Remove to the garbage can

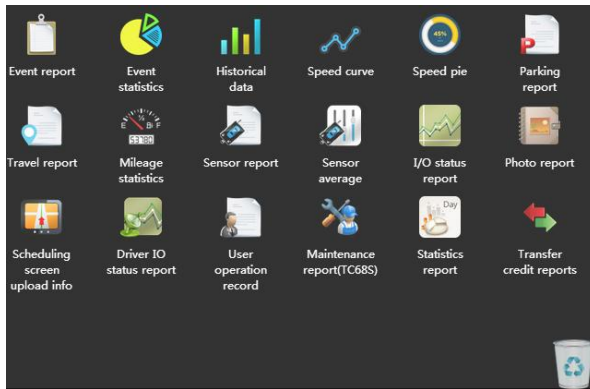


Figure 5: Desired functions remained

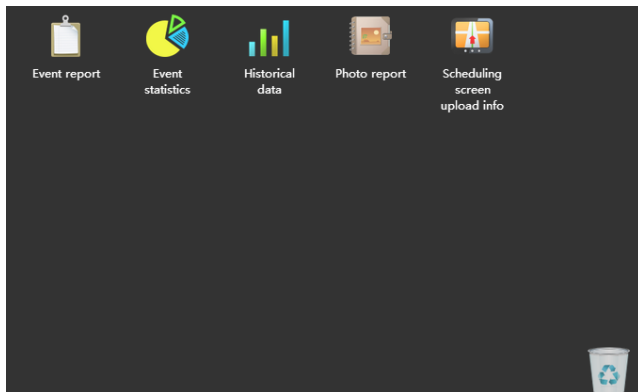


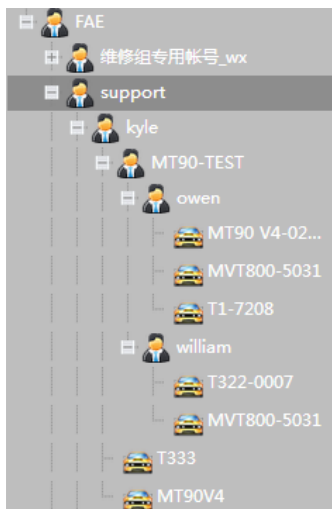
Figure 6: Double-click an icon to restore





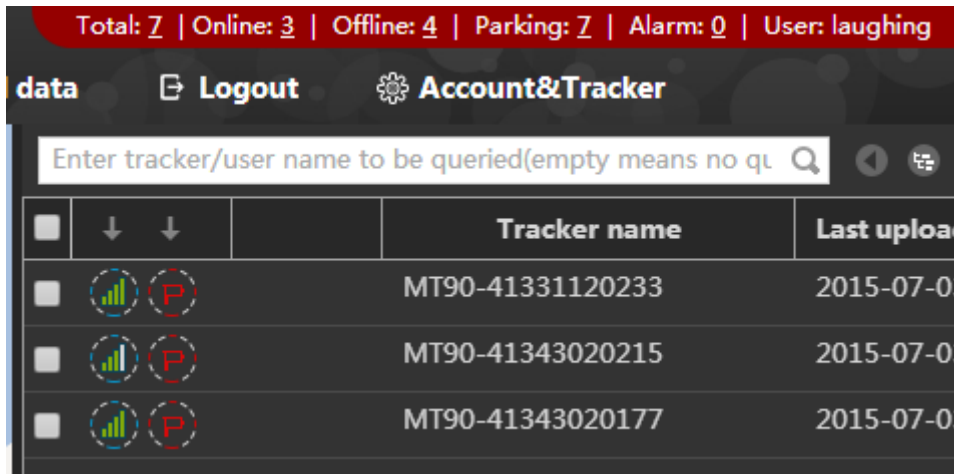
### 3.4 Adding Unlimited Sub-Accounts

Any users are allowed to add unlimited sub-accounts and assign specific permissions to sub-users when accounts' permissions are not set. For details, see the section 5.1.1 "Adding a Template" and 5.1.2 "Adding a Sub-Account."



### 3.5 Status Display

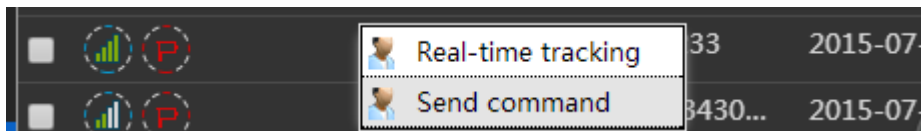
The number of device status will be automatically displayed in the upper right corner of the main interface, including the number of total, online, offline and parking devices, and alarms. Click a number, then all the trackers will be displayed on the right panel. For example, click **3**, then the online trackers will be displayed.



### 3.6 Sending a Command

You can use any of the following ways to send a command to a tracker:

1. On the panel, right-click the desired device, and select **Send command**. On the window that is displayed, select a command, and click **Send command**.



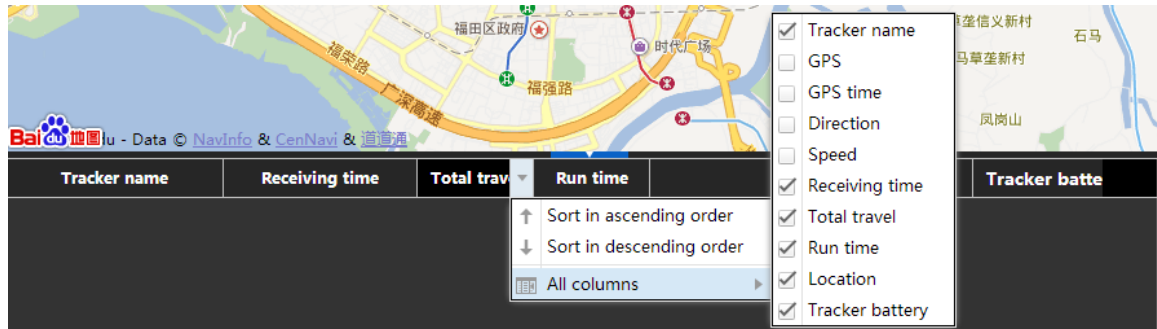
2. On the panel, select a tracker. Then the tracker information will be shown on the map. Click **Send command**. On the window that is displayed, select a command, and click **Send command**.



Note: If you want to know how to send commands in batches, see the section 5.7 "Sending Commands in Batches."

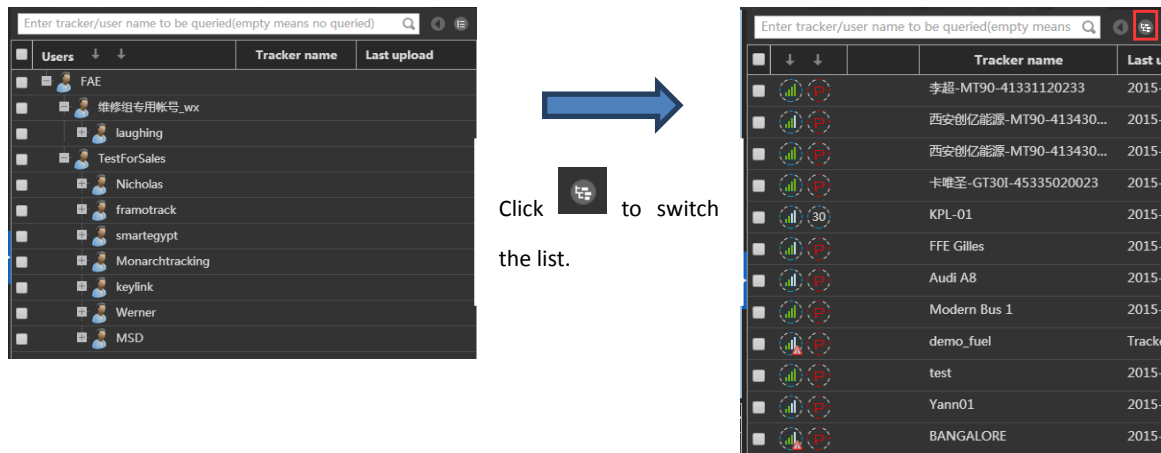
### 3.7 Tracker Information Display

Set the tracker information to be displayed.

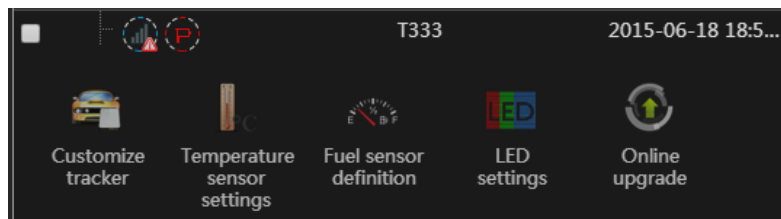







### 3.8 Panel

On the panel, click  to switch between the user list and the tracker list.



On the tracker list, click a tracker twice. The shortcut settings will be displayed.



	Indicates that the speed is 0 and the tracker enters the parking mode.		Indicates that the tracker speed is 21 km/h.
	Indicates the tracker's online status and GSM signal strength.		Indicates that the tracker is online and an alarm is generated.
	Indicates that the tracker is offline.		

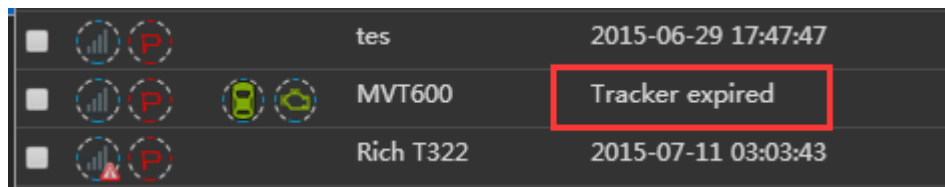
### 3.9 Icon Functions

	Search		Export to Excel
	Export to PDF		Send a message
	View the geo-fence		Edit/Modify
	Delete		Transfer
	View the account or password		Change the password
	Transfer		Copy
	Change the IMEI number		Download
	Export to KML		Show the trace
	Show the point of interest (POI)		Hide the POI
	Have sent the command		Have not sent the command

### 3.10 Unit per Year

Unit per year (UY) = Unit of Trackers x Years

For example, if there are 100 UY and 100 trackers in the sub-account, only 1 year of service time can be assigned to each tracker. If the UY service time exceeds the preset value or is 0, the tracker expires and MS03 services will not available for the tracker.

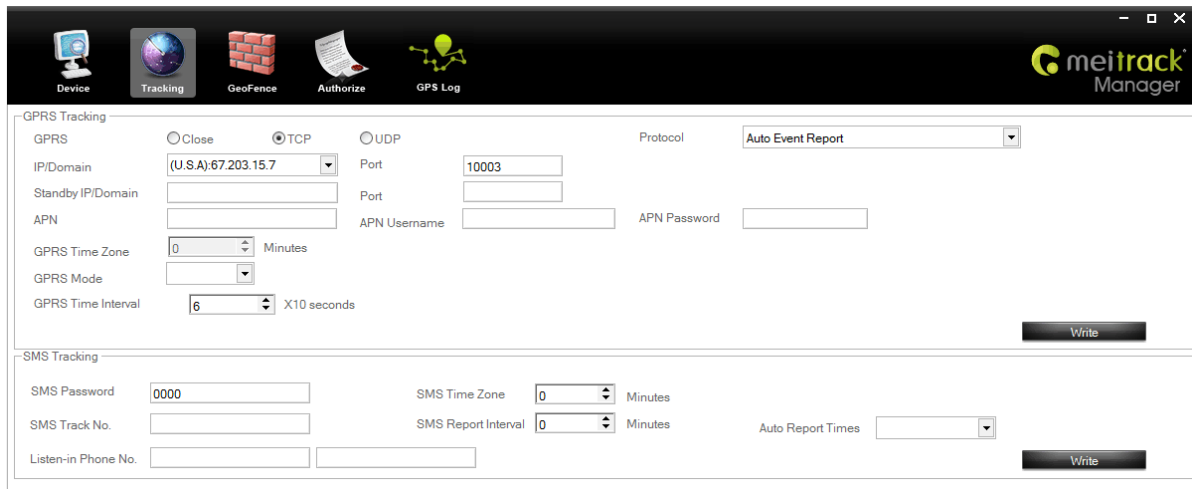


## 4 Getting Started

### 4.1 Configuring Tracker's GPRS Parameters

You can use any of the following ways to configure GPRS Parameters.

#### 4.1.1 Configured by Meitrack Manager



The screenshot shows the Meitrack Manager interface with the following configuration fields:

- GPRS Tracking:**
  - Protocol:  Close  TCP  UDP
  - IP/Domain: (U.S.A):67.203.15.7
  - Port: 10003
  - Standby IP/Domain: (blank)
  - Port: (blank)
  - APN: (blank)
  - APN Username: (blank)
  - APN Password: (blank)
  - GPRS Time Zone: 0 Minutes
  - GPRS Mode: (blank)
  - GPRS Time Interval: 6 X10 seconds
  - Write button
- SMS Tracking:**
  - SMS Password: 0000
  - SMS Time Zone: 0 Minutes
  - SMS Track No.: (blank)
  - SMS Report Interval: 0 Minutes
  - Auto Report Times: (blank)
  - Listen-in Phone No.: (blank)
  - Write button

- **GPRS:** Select TCP.
- **Protocol:** Select **Auto Event Report**.
- **IP/Domain:** Select **(U.S.A): 67.203.15.7**.
- **Port:** Set the TCP or IP port for receiving GPRS data. The Meitrack server port is **10003**.
- **Standby IP/Domain**, and **Port:** This function is available for users having multiple servers. When the active server fails, device data will be sent to the standby server automatically. Leave the two options blank if no standby server exists.
- **APN, APN Username**, and **APN Password:** Obtain the Access Point Name (APN), APN account, and APN password from your SIM card provider. If the information you input is incorrect, the GPRS network fails to be connected.
- **GPRS Time Interval:** Set the interval for regularly reporting GPRS data. The interval unit is 10 seconds. **6** indicating 1 minute is recommended.
- **GPRS Time Zone:** The local time will be shown when the tracker communicates with the platform. If you use the MS03, the time zone will be automatically detected. Leave this option blank.
- **GPRS Interval (ACC OFF):** Set the interval for regularly reporting GPRS data when the engine is off. The interval unit is 10 seconds. (Before using the function, the device must be connected to engine detection.)

Note: For details, see the *MEITRACK Manager User Guide*.

#### 4.1.2 Configured by SMS Commands

**MT90/MVT800/MVT100/MVT340/MVT380/MVT600/T1/T3/T355/T333/T311 commands:**

A. Set GPRS parameters.

**0000,A21,Connection mode,IP address,Port,APN,APN user name,APN password**

Descriptions:

Connection mode = 0: GPRS function disabled.

Connection mode = 1: GPRS function enabled; use TCP/IP reporting mode.

Connection mode = 2: GPRS function enabled; use UDP reporting mode.

IP address: IP address or domain name. A maximum of 32 bytes are supported.

Port: a maximum of 5 digits.

APN/APN user name/APN password: a maximum of 32 bytes respectively. If no user name and password are required, leave them blank.

**Example: 0000,A21,1,67.203.15.7,10003,APN,APN user name,APN password**

- B. Set scheduling tracking parameters.

**0000,A12,Interval,No. of times**

Descriptions:

Interval = 0: GPRS regularly-reporting function disabled.

Unit: x10 seconds

The maximum time interval is 65535 x 10 seconds.

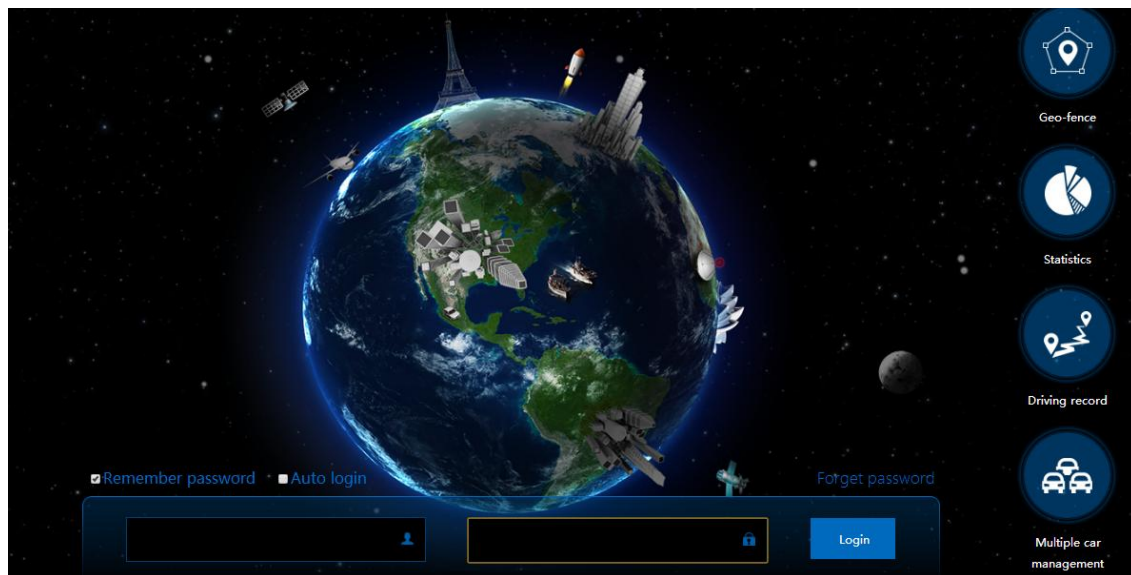
No. of times = 0: uninterrupted data reporting (used in the platform).

No. of times = [1...65535]: won't stop reporting until the number of reporting times reaches the preset value.

**Example: 0000,A12,6,0**

## 4.2 Logging In to the MS03

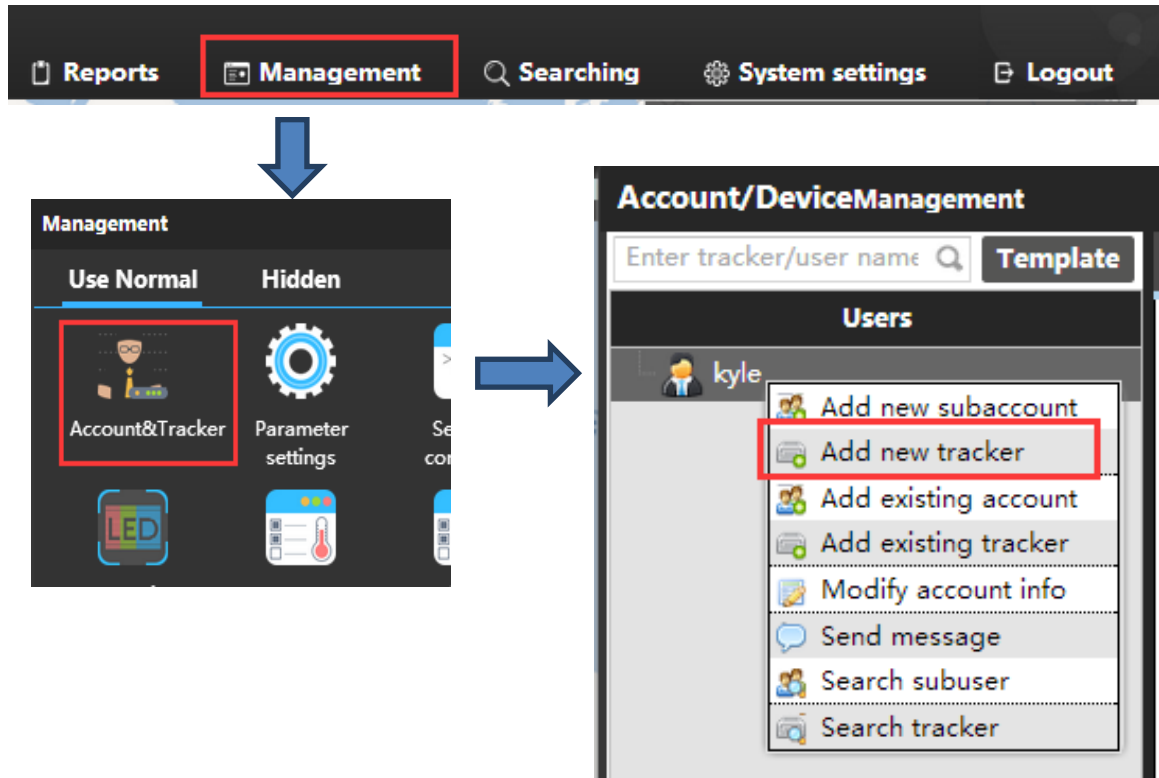
Visit <http://ms03.trackingmate.com>, enter the user name and password, and log in to the MS03. (Purchase the login account from your provider.)



## 4.3 Adding a Tracker

To add a tracker, perform the following operations:

1. On the main interface, choose **Management**. Select **Account & Tracker** from **Use Normal**.
2. On the **Account/Device Management** window, right-click a user, and select **Add new tracker**.
3. On the **Add new tracker** window, set the following parameters, and click **Submit**.



### Add new tracker

Tracker ID:

Tracker password:

Tracker name:

SIM number:

Model:

Expiry date:

Tracker per year:

Tracker icon

Icon list

**Submit**

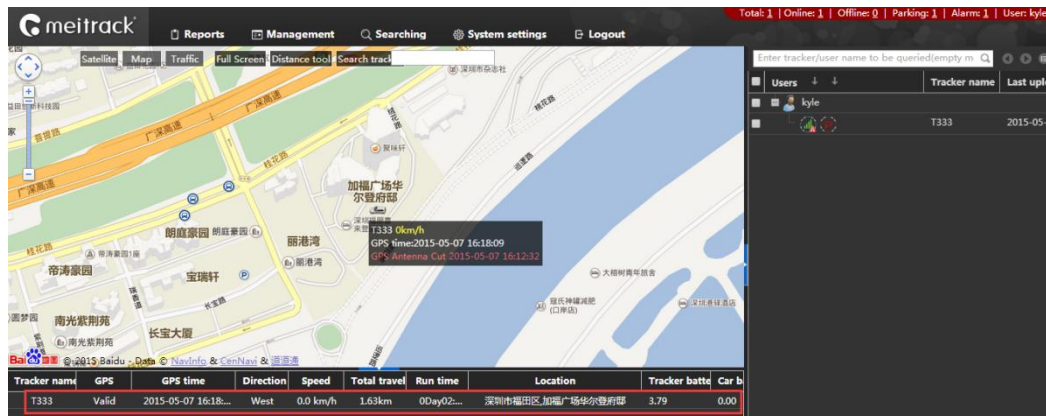
- **Tracker ID:** Identifies the tracker's IMEI number. (Query the number by SMS command: 0000,E91.)  
If the input information is incorrect, device status cannot be queried.
- **Tracker password:** indicates the SMS command password of the tracker. The default password is 0000. You can change the password if needed.

- **Tracker name:** You can customize a name, such as the car license plate number, driver name, and company name.
- **SIM number:** indicates the phone number of your SIM card used in the tracker.
- **Model:** Select the tracker model.
- **Tracker per year:** UY = Unit of Trackers x Years

#### 4.4 Viewing the Latest Report

On the right panel of the main interface, select a tracker. The latest report about the tracker will be displayed on the lower left corner of the main interface, as shown in the following figure.

When a tracker is added, you can check whether the tracker sends data to the server.



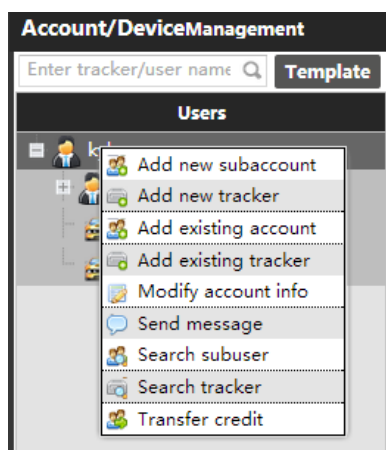
### 5 Management

#### 5.1 Account and Device Management

On the main interface, choose **Management**.

On the **Management** window that is displayed, select **Account & Tracker** from **Use Normal**. The **Account/Device Management** window will be displayed, as shown in the following figure.

On the window, you can add sub-accounts and trackers and perform other operations.




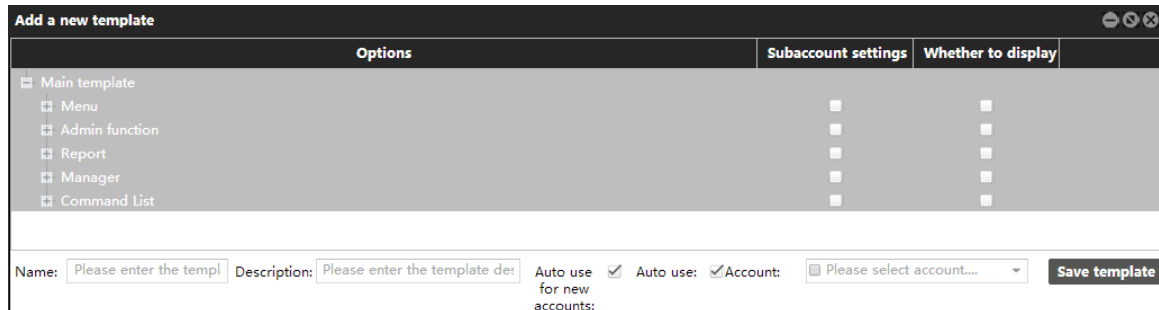
##### 5.1.1 Adding a Template

With the function, you can set the permissions of sub-accounts and determine whether the permissions are shown.



To add a template, perform the following operations:

1. On the **Account/Device Management** window, click **Template**.
2. On the window that is displayed, click . The **Add a new template** window will be displayed, as shown in the following figure.



Options	Subaccount settings	Whether to display
Main template	<input type="checkbox"/>	<input type="checkbox"/>
Menu	<input type="checkbox"/>	<input type="checkbox"/>
Admin function	<input type="checkbox"/>	<input type="checkbox"/>
Report	<input type="checkbox"/>	<input type="checkbox"/>
Manager	<input type="checkbox"/>	<input type="checkbox"/>
Command List	<input type="checkbox"/>	<input type="checkbox"/>

Name:  Description:  Auto use for new accounts:  Auto use:  Account:  **Save template**

- **Subaccount settings:** Set the permissions of sub-accounts. For example, deselect **Subaccount settings** from the **Report** row. It indicates that the sub-user cannot set the **Report** function for the lower-level user.
- **Whether to display:** Determine whether the function will be applied.
- **Name:** Enter a name of the template.
- **Description:** Enter a description about the template.
- **Auto use for new accounts:** If this option is selected, after you create a sub-account, the sub-account will be assigned with the account's function template. If the account supports multiple function templates, its sub-account will be assigned with multiple templates of the account.
- **Auto use:** Whether to use this template automatically.
- **Account:** Select a sub-account to assign the template function.

### 5.1.2 Adding a Sub-Account

To add a sub-account, perform the following operations:

1. On the **Account/Device Management** window, right-click a user, and select **Add new subaccount**. The **Add new subaccount** window is displayed, as shown in the following figure.
2. Set the following parameters, and click **Submit**.

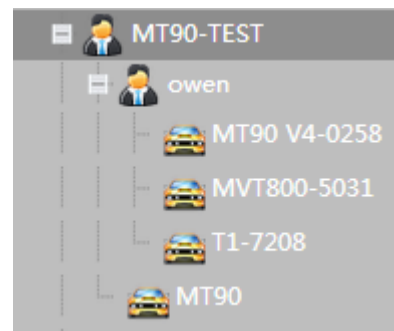
### 5.1.3 Adding a Tracker

For details, see the section 4.3 "Adding a Tracker."

### 5.1.4 Adding Existing Account

Set the existing account to a sub-account.

Example: On the **Account/Device Management** window, right-click **MT90-TEST**, and select **Add existing account**. The **Add existing account** window is displayed. Enter Owen's account and login password. Then the Owen account will be the sub-account of MT90-TEST.

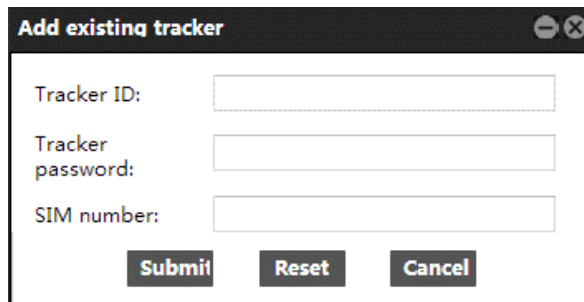


### 5.1.5 Adding Existing Tracker

With the function, multiple users can monitor the same tracker at the same time.

To add an existing tracker, perform the following operations:

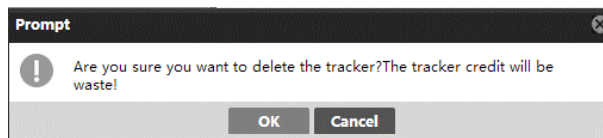
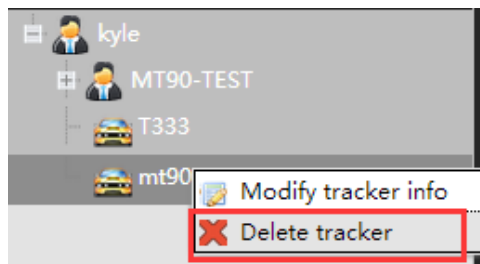
1. On the **Account/Device Management** window, right-click a user, and select **Add existing tracker**. The **Add existing tracker** window is displayed, as shown in the following figure.
2. Set the following parameters, and click **Submit**.



- **Tracker ID:** Identifies the tracker's IMEI number. The IMEI number must be the same as the one on the tracker.
- **Tracker password:** indicates the SMS command password of the tracker. The input information must be consistent with that when you add this tracker.
- **SIM number:** indicates the phone number of your SIM card used in the tracker. The input information must be consistent with that when you add this tracker.

### 5.1.6 Deleting a Tracker

On the **Account/Device Management** window, right-click a tracker, select **Delete tracker**. A **Prompt** window will be displayed. Click **OK**.



Caution: After the tracker is deleted, its UY will be deleted.

### 5.1.7 Modifying Tracker Information

After the tracker information is changed, the new tracker will inherit the UY of the old tracker.

To modify the tracker information, perform the following operations:

1. On the **Account/Device Management** window, right-click a tracker, and select **Modify tracker info**.

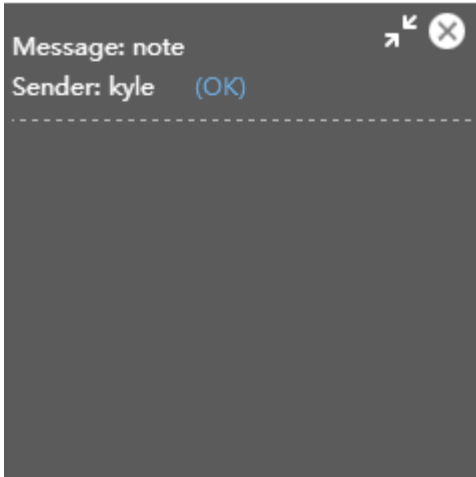
2. On the page that is displayed, click **Change tracker ID**.
3. Enter the new IMEI number, and click **Submit**.

### 5.1.8 Sending a Message

Only upper-level users can send messages to lower-level users.

To send a command, perform the following operations:

1. On the **Account/Device Management** window, select a sub-account, right-click it, and select **Send message**.
2. On the **Send message** window, edit the text, and click **Submit**. The sub-account will receive the message later.



### 5.1.9 Searching a Sub-Account

The function will be shown when a user has sub-users.

On the **Account/Device Management** window, right-click a user, and select **Search subuser**.

A list of your sub-accounts will be displayed.

Subaccount	User name	Tracker per year <	Mobile phone	Mailbox	Address	Remarks
012345678912345	MT90-TEST	1	1234567890	QEW@QQ.COM	SHENZH...	
owen	owen	48				
owen123	owen123	1				
william	william	41				
ajun123	ajun	0	85313875944			
ddsd	fdfdv	0	1223	123@qq.com		

**Keyword:** Enter a keyword to search the sub-account.

**Tracker per year <:** Search the sub-account within the range.

### 5.1.10 Searching a Tracker

Search a tracker to query the tracker information. You can edit, delete, copy, and transfer the tracker.

To search a tracker, perform the following operations:

On the **Account/Device Management** window, right-click a user, and select **Search tracker**. The **Tracker** window will be displayed, as shown in the following figure.

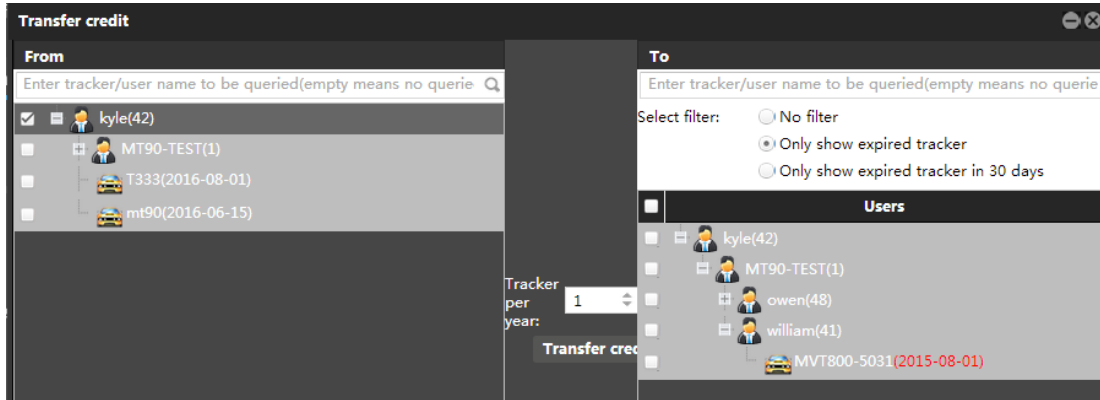
Search by	Tracker ID	Create account	Create user name	SIM number	Model	Registration	Expiry date	Last upload	
Search by tracker name	865734029480645	william	william	123456	TC68	2015-06-23	2016-07-18	2015-08-06 01:15:...	
Search by tracker ID	359464030376904	012345678912345	MT90-TEST	123456	MT88	2015-07-29	2016-07-29	1970-01-01 16:00:...	
Search by tracker SIM card number	863158020724565	kyle	kyle	1231	MT90	2015-06-15	2016-06-15	2015-06-22 07:33:...	
Search by account name	MT90 V4-0258	863158020720258	owen	owen	123456	MT90	2014-12-23	2016-08-01	2015-07-08 03:20:...

### 5.1.11 Transferring UY in Batches

Transfer UY in batches to a user whose tracker is about to expire or has expired.

To transfer UY in batches, perform the following operations:

1. On the **Account/Device Management** window, right-click a user, and select **Transfer credit**.
2. On the **Transfer credit** window, select **kyle (42)** from the left pane and a tracker from the right pane, set **Tracker per year**, and click **Transfer credit**.
3. On the window that is displayed, enter the transfer password, and click **OK**.



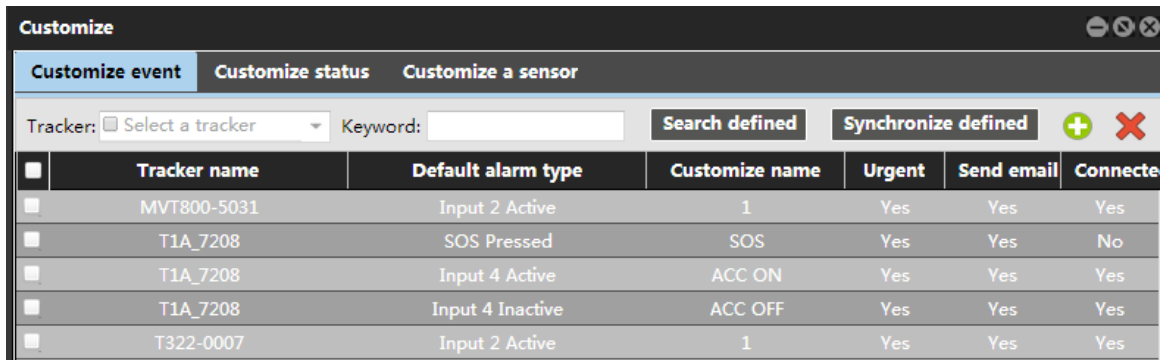
Note: **kyle (42)** indicates that the kyle account has 42 UY. When transferring UY for the first time, you need to set the transfer password.

## 5.2 Customization

On the main interface, choose **Management**.

On the **Management** window that is displayed, select **Customize** from **Use Normal**. The **Customize** window will be displayed, as shown in the following figure.

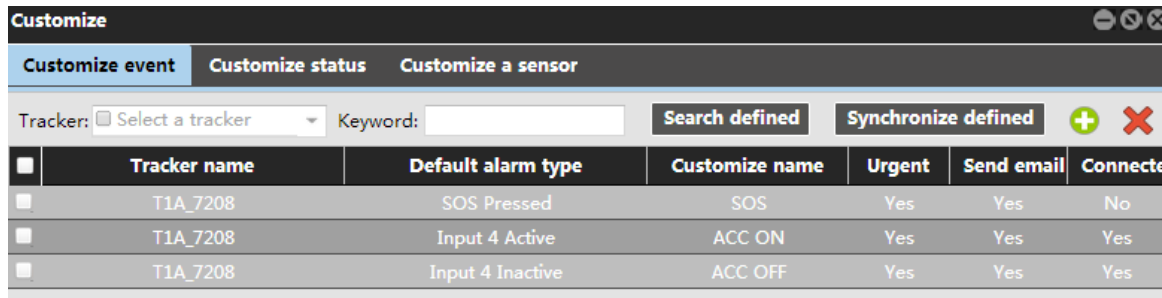
There are three options: **Customize event**, **Customize status**, and **Customize a sensor**.



### 5.2.1 Customizing an Event

Define status changes (active or inactive) of trackers' input ports. When the status changes, the tracker will send GPRS data to the server.

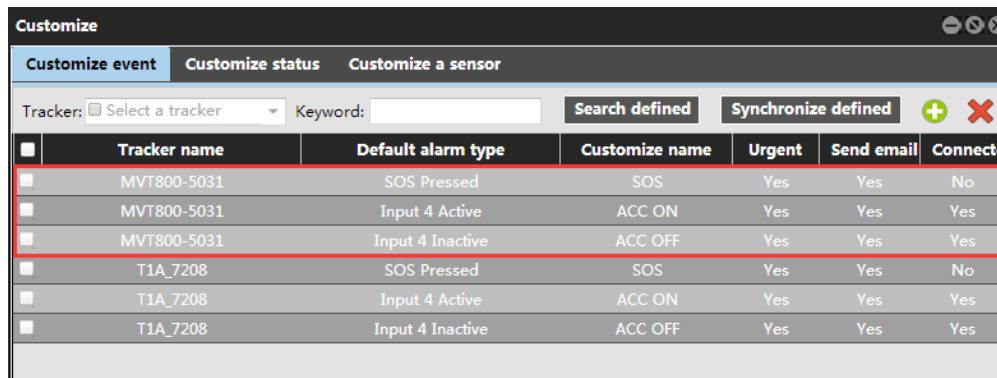
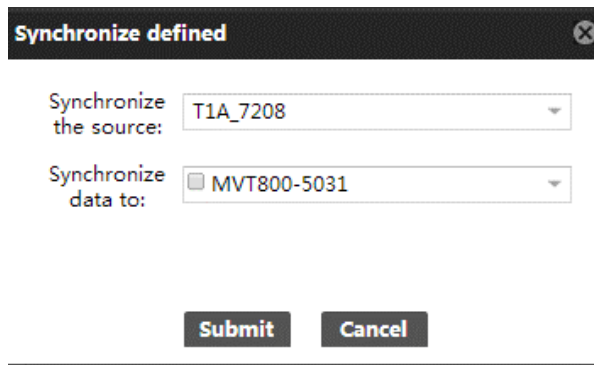
Example: Customize the **SOS Pressed** event name as **SOS**, the **Input 4 Active** event name as **ACC ON**, and the **Input 4 Inactive** event name as **ACC OFF**.



**Synchronize defined:** You can synchronize tracker information to another tracker.

To synchronize information, perform the following operations:

1. On the **Customize event** page, click **Synchronize defined**.
2. On the **Synchronize defined** window that is displayed, enter the source and target trackers, and click **Submit**. The tracker information is synchronized, as shown in the following figure.





### 5.2.2 Customizing Status

Define I/O port status. All status information is included in data packages sent to the server.

On the **Customize status** page, click . The **Add customized status** window is displayed. Set the parameters shown in the following figure.

- **Tracker:** Select **MVT800-5031**.
- **I/O port:** Select **Output 1**. Output 1 is used to control the engine circuit.
- **Customize name:** Set the parameter to **Engine state**.

- **Valid:** Set the parameter to **Out**, and select ACC Off icon 


- **Invalid:** Set the parameter to **Normal**, and select ACC On icon 


**Add customized status** ✕

Tracker:

I/O port:



Customize name:

Valid:  

Invalid:  

**Customize** ⏪ ⏩ ✕

Tracker: 
 Keyword:

<input type="checkbox"/>	Tracker name	I/O port	Customize name	Valid icon	Valid	Invalid icon	Invalid
<input type="checkbox"/>	MVT800-5031	Output 1	Engine state		out		normal

### 5.2.3 Customizing a Sensor

Customize sensor formulas. The function is available for linear analog sensors, such as fuel sensors. The formulas will be displayed on the platform after settings.

**Add a customized sensor** ✕

Tracker:

Customize name:

Formula:

Display type:



**Customize**

Customize event | **Customize status** | Customize a sensor

Tracker:  Keyword:  Search defined Synchronize defined + ×

	Tracker name	Customize name	Formula	Display type
<input type="checkbox"/>	MVT800-5031	fuel	AD1*6/1024/5	Percentage
<input type="checkbox"/>	T333	AD1	AD1	Value
<input type="checkbox"/>	T333	AD2	AD2	Value

Note:

- Analog AD (AD1, AD2, AD3) formula:  
 MVT340/MVT380:  $(AD \times 6)/1024$   
 T1/T3/MVT600/MVT800/MVT100:  $(AD \times 3.3 \times 2)/4096$   
 T322X/T333/T355:  $AD/100$
- Battery analog (AD4) formula:  
 MVT340/MVT380:  $(AD4 \times 3 \times 2)/1024$   
 MT90/T1/T3/MVT100/MVT600/MVT800/TC68S:  $(AD4 \times 3.3 \times 2)/4096$   
 T311/T322X/T333/T355:  $AD4/100$
- External power supply (AD5) formula:  
 MVT340/MVT380:  $(AD5 \times 3 \times 16)/1024$   
 T1/T3/MVT100/MVT600/MVT800/TC68S:  $(AD5 \times 3.3 \times 16)/4096$   
 T311/T322X/T333/T355:  $AD5/100$

### 5.3 Setting a Temperature Sensor

The function is only available for the MVT600, T1, and MVT800.

A temperature sensor is used to measure the temperature of vehicles and environments in real time.

**Temperature sensor**

Tracker:  Sensor name:  SN:  + × Edit one and assign to all

	Name	No	SN	High temp	High temp value	Low temp	Low temp value	Last upload	Temp	
<b>MVT800-5031 Total(1)</b>										
<input type="checkbox"/>		1	28 27 56 0D 04 00 00 27	No	0	No	0	2015-01-30 16:14:05		<span>×</span> <span>↻</span>
<b>T333 Total(4)</b>										
<input type="checkbox"/>	ww	4	28 79 07 24 04 00 00 A1	Yes	20	Yes	1	2015-06-18 18:52:42	28.250	<span>×</span> <span>↻</span>
<input type="checkbox"/>		3	28 F3 49 23 04 00 00 49	No	0	No	0	2015-06-18 18:52:42		<span>×</span> <span>↻</span>
<input type="checkbox"/>		2	28 69 F3 E3 03 00 00 86	No	0	No	0	2015-06-18 18:52:42	27.810	<span>×</span> <span>↻</span>
<input type="checkbox"/>		1	28 DA F5 23 04 00 00 07	No	0	No	0	2015-06-18 18:52:42	28.180	<span>×</span> <span>↻</span>

For details, see the *MEITRACK Temperature Sensor User Guide*.

### 5.4 Setting a Fuel Sensor

The function is only available for the MVT600, T1, and MVT800.

A fuel sensor is used to measure vehicle fuel and check whether an alarm is generated.

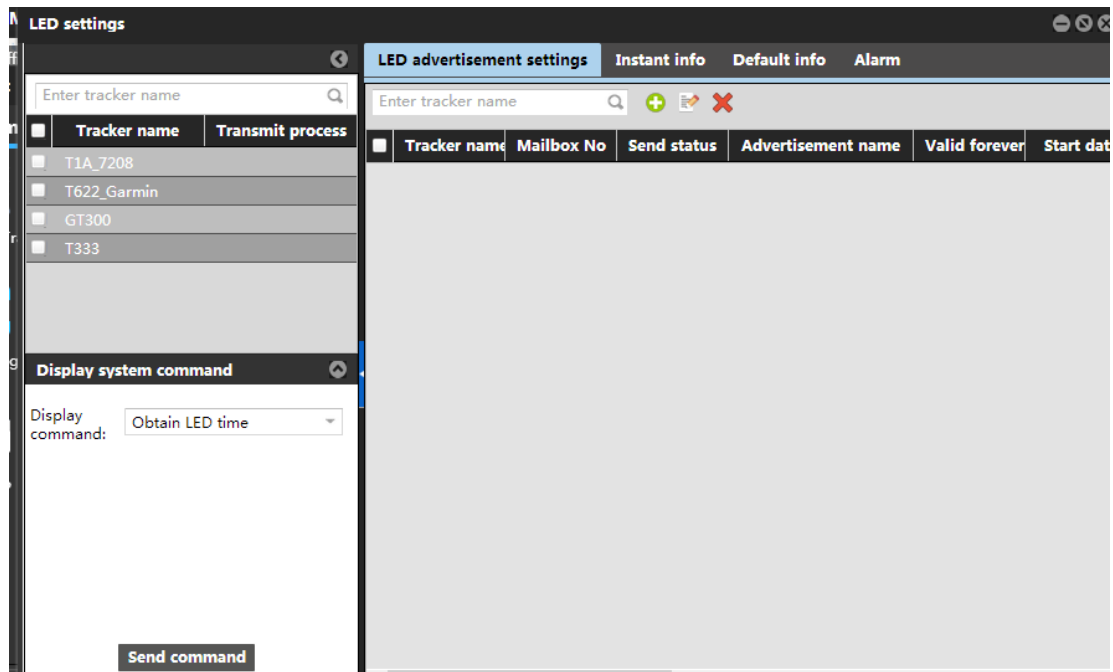
Fuel sensor							
Tracker: <input type="text" value="Select a tracker"/> <input type="button" value="Read fuel sensor settings"/>							
<input type="checkbox"/>	Tracker name	Fuel sensor	Low fuel percentage	Full fuel percentage	Last upload	Fuel	
<input type="checkbox"/>	T622_Gar...	V-type fuel sensor (A...	20	90	2015-07-30 16:30:20	0.00%	
<input type="checkbox"/>	MVT800-5...	V-type fuel sensor (A...	5	95	2015-01-30 16:14:05	0.12%	
<input type="checkbox"/>	T333	V-type fuel sensor (A...	1	99	2015-06-18 18:52:42	0.03%	
<input type="checkbox"/>	T1A_7208	V-type fuel sensor (A...	10	90	2015-07-20 08:56:18	0.09%	

For details, see the *MEITRACK Fuel Sensor User Guide*.

## 5.5 Setting a LED Display

The function is only available for the MVT600, T1, T3, and T333.

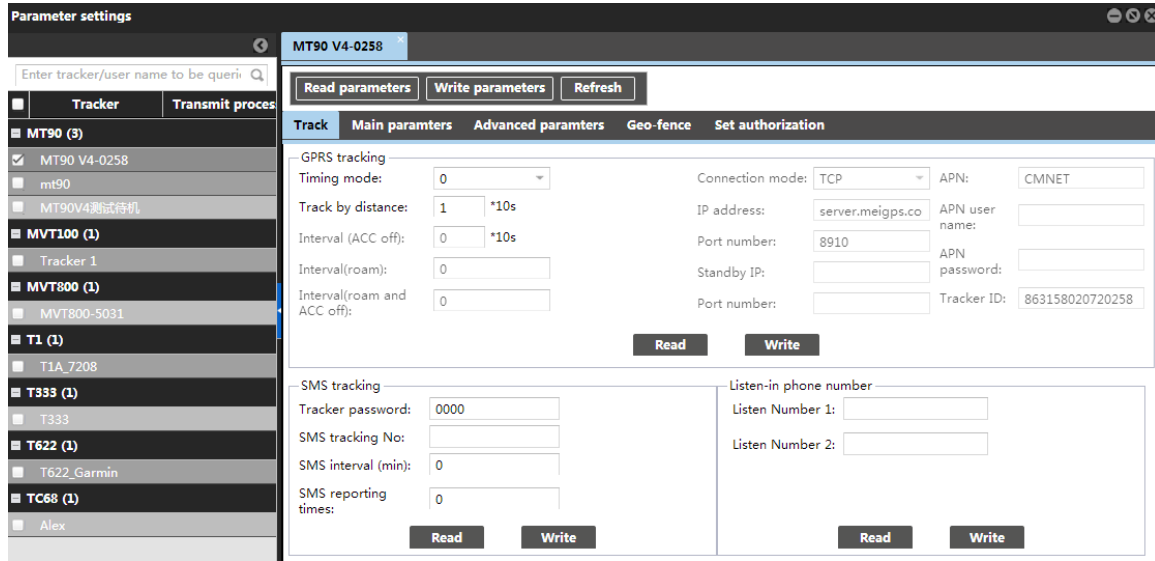
A LED display is used to play vehicle advertisements and emergent notification.



For details, see the *MEITRACK LED Display User Guide*.

## 5.6 Setting Tracker Parameters

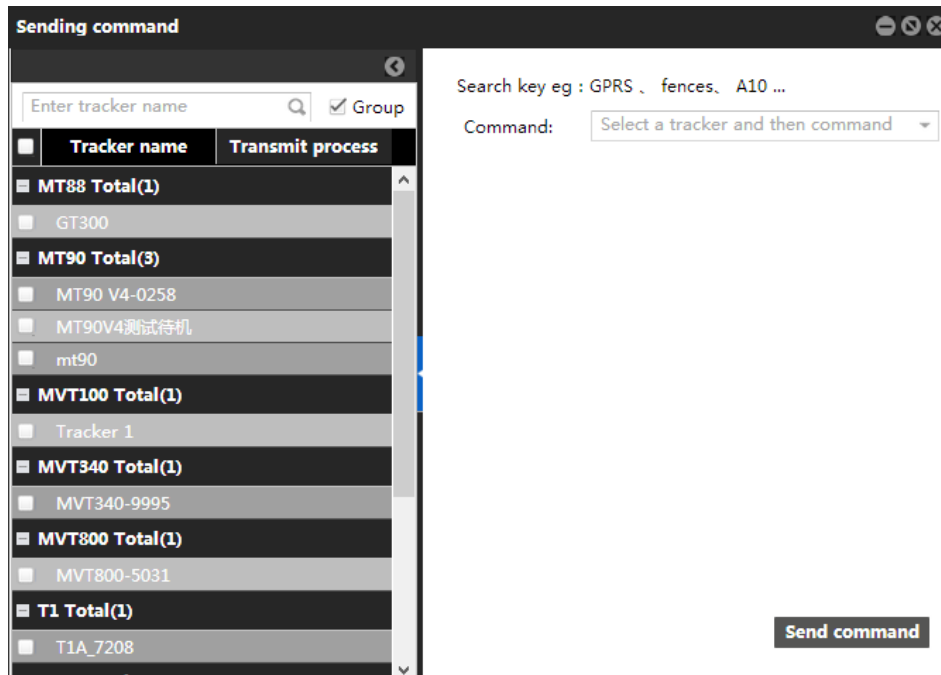
1. On the main interface, choose **Management**.
2. On the **Management** window that is displayed, select **Parameter settings** from **Use Normal**.
3. On the **Parameter settings** window that is display, set parameters for online trackers.



For details, see the *MEITRACK Manager User Guide*.

### 5.7 Sending Commands in Batches


1. On the main interface, choose **Management**.
2. On the **Management** window that is displayed, select **Sending command** from **Use Normal**.
3. On the **Sending command** window that is displayed, select multiple trackers and a command, and click **Send command**.

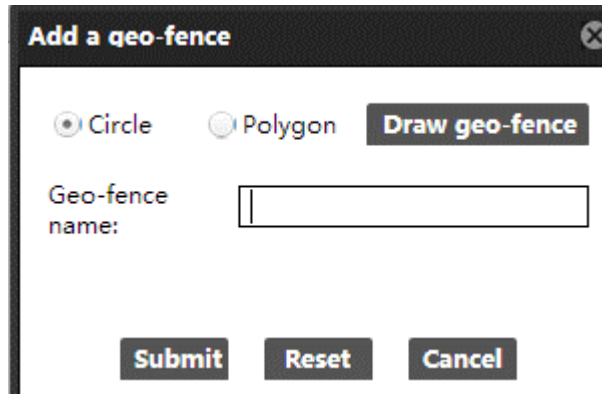
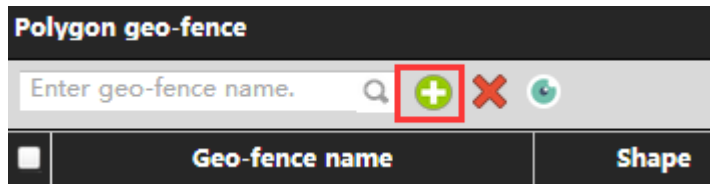


For details, see the *MEITRACK GPRS Protocol*.

### 5.8 Polygon Geo-Fence Management

The polygon geo-fence management and binding functions need to be used together.

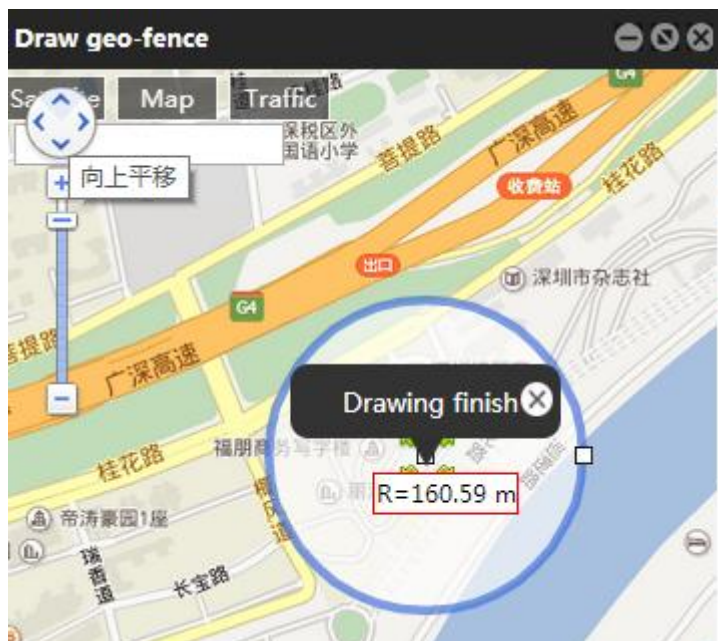
Polygon geo-fence management: On the **Polygon geo-fence** window, click . On the **Add a geo-fence** window that is displayed, set a geo-fence as required. The geo-fence can be bounded to a tracker.



**Circle/Polygon:** indicates the geo-fence shape.

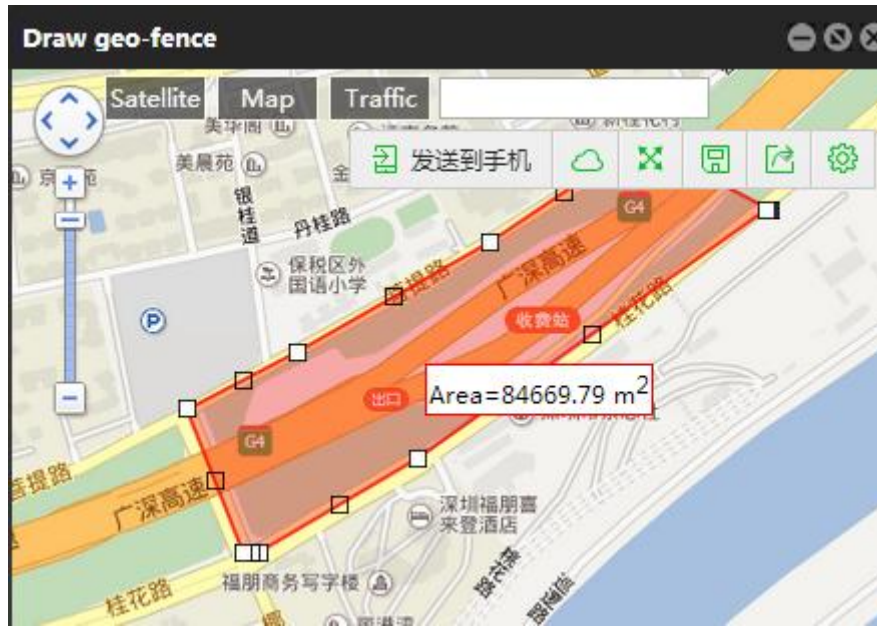
**Draw geo-fence:** You can draw a geo-fence.

**Circle:** On the **Add a geo-fence** window that is displayed, select **Circle**, and click **Draw geo-fence**. The map page will be displayed. Click the map, and drag the mouse to draw a geo-fence. Click the geo-fence zone, and click **Drawing finish**. Enter the geo-fence name, and click **Submit**.



**Polygon:** On the **Add a geo-fence** window that is displayed, select **Polygon**, and click **Draw geo-fence**. The map page will be displayed. Click the map, and drag the mouse to draw a geo-fence. A geo-fence supports at most 32 sides. After the geo-fence

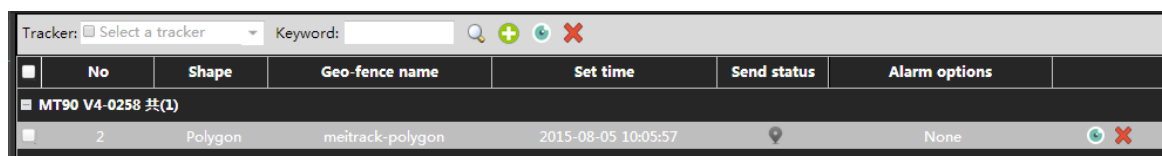
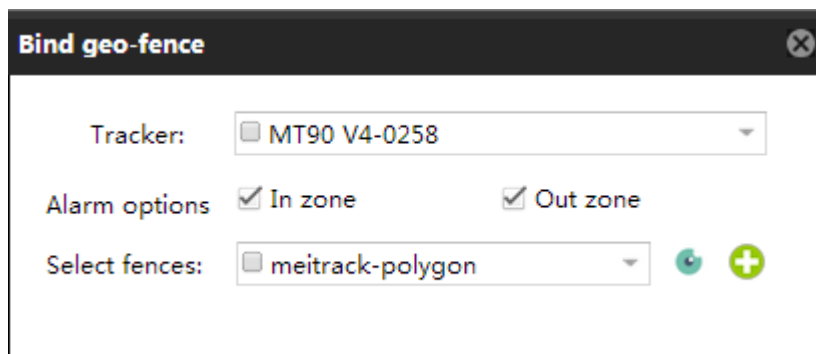
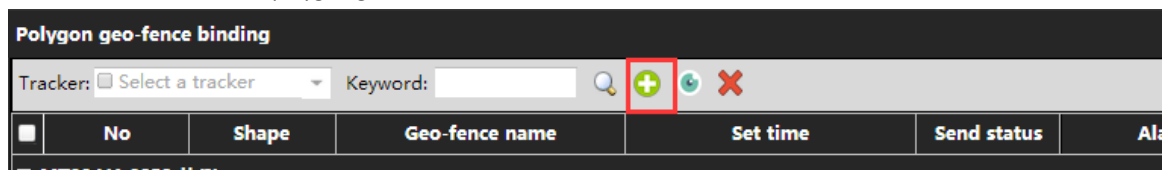
is complete, click the geo-fence zone, and click **Drawing finish**. Enter the geo-fence name, and click **Submit**.




Note: After the geo-fence is drawn, go to the **Polygon geo-fence binding** page to bind it to a tracker.

### 5.9 Polygon Geo-Fence Binding





Bind a tracker to a circle or polygon geo-fence.



On the **Polygon geo-fence binding** window, click . On the **Bind geo-fence** window that is displayed, select a tracker,

specify **Alarm options**, and select an existing geo-fence or click  to draw a new geo-fence, and click **Submit**.

You can click  to view the geo-fence.

- **Tracker:** Select a tracker to bind a geo-fence.
- **Alarm options:** Select the Enter or Exit Geo-fence Alarm as required.
- **Select fences:** Select a geo-fence from the drop-down list. You can click  to view the geo-fence and confirm its location.
- : Draw a new geo-fence to bind the tracker. The method of drawing a geo-fence is the same as that in this section.
- **Send status:** : The tracker has not confirmed that the parameters are set successfully. : The tracker has confirmed that the parameters are set successfully.

### 5.10 Driver Information


When you add a driver, you can bind the RFID card number and vehicle information, which helps query driver I/O status reports.

	Name	Birthday	Gender	Phone	Mobile phone	Birthday	ID No	Driving licens	Photo
<input type="checkbox"/>	Kyle		Man	123456789	123456789		123456789	123456789	

### 5.11 RFID Card Management

The RFID card management function is only available for the MVT600, T1, T3, and T333.

This function includes driver information and RFID card binding, which can be used together for better vehicle management.

On the **RFID card** window, click . On the **Add an RFID** window that is displayed, set the RFID card number and bind a driver. These information will be included in a driver I/O status report.

**Add an RFID** ✕

RFID number:

Added number:

Driver:  Add driver

Submit
Reset
Cancel

**RFID card** ✕

Please enter the RFID nun  + ✕

	RFID number	Driver	Creation date
<input type="checkbox"/>	12345678	Kyle	2015-06-02 15:48

Note: To manage RFID cards, driver information must be added first.  
 For details, see the *MEITRACK RFID User Guide*.

### 5.12 Vehicle Information Management

Bind the vehicle information, driver information, and tracker, facilitating information query.

**Add a car** ✕

Car license plate:

Purchase date:

Model:

Color:

Engine number:

Car frame number:

Tracker:


Driver name:

Photo Upload photo

Submit
Reset
Cancel

Car license plate	Purchase date	Model	Color	Engine number	Car frame number	Binding terminals	Binding driver	Phone
鄂B123456	2015-06-02	奥迪	红色	123456	123456	T333	Kyle	

### 5.13 Setting a Contact Mailbox

On the **Alarm contact** window, click . On the **Add** window that is displayed, set a contact mailbox.

When an alarm is generated, the alarm information will be sent to the mailbox.

**Add**

User account:

User contact mailbox:

Send alarm:

Event:

User account	Contact account	Send alarm	Event
kyle	123@qq.com	Yes	Input 2 Active

### 5.14 Online Upgrade

You can upgrade online trackers by Over-the-Air (OTA).

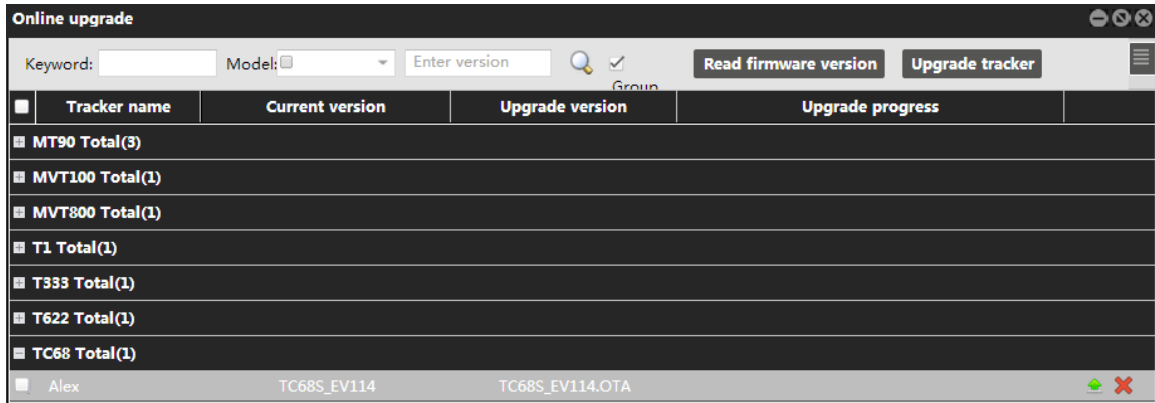
**Please enter password**

User name:

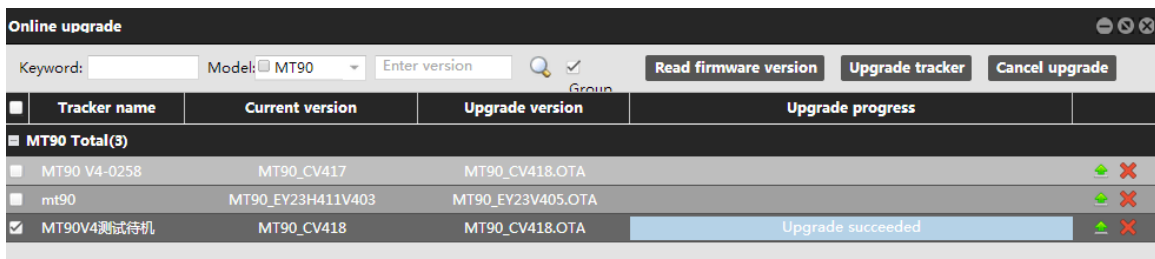
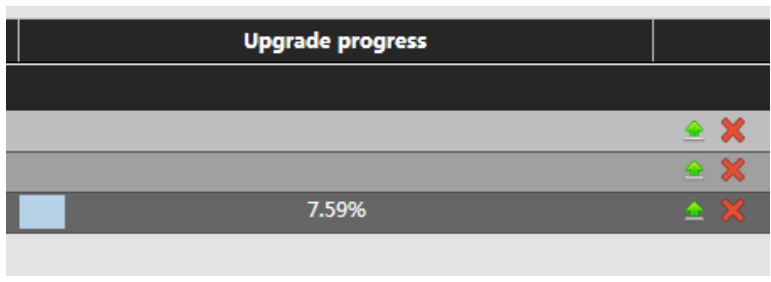
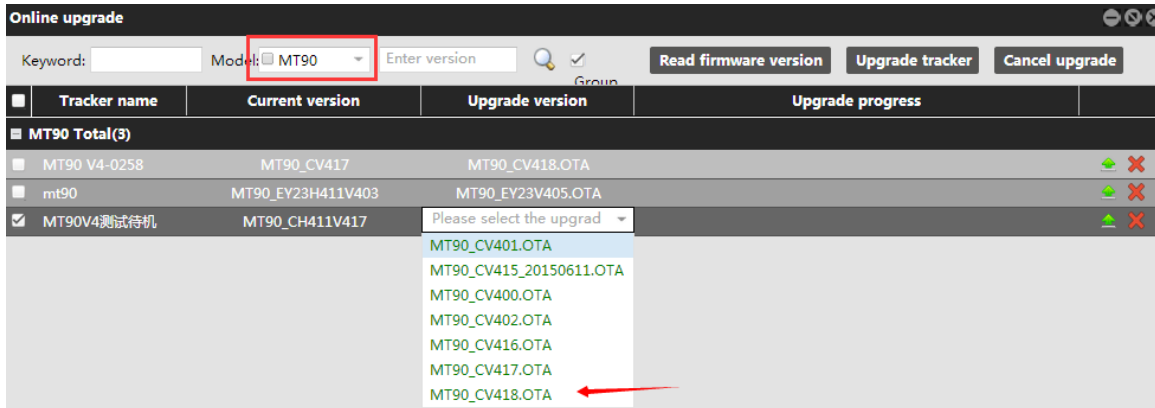
Login Password:



On the main interface, choose **Management**. On the window that is displayed, select **Online upgrade** from **Use Normal**. Enter the login password to go to the **Online upgrade** page.



Select a tracker to be upgraded, click . The tracker will be upgraded automatically. If "Upgrade succeeded" is displayed on the **Upgrade progress** column, the upgrade is complete.



Note: While online upgrading, ensure that the tracker has sufficient battery power (more than 50%).

## 6 Reports

On the **Reports** window, there are various reports about data analysis and processing.

Note: The combinations of report query criteria are as follows:

- **Tracker name:** Indicates the name input when you add a tracker. If you deselect this option, all trackers will be displayed.
- **Alarm type:** Indicates the event type. If you deselect this option, all events will be displayed.
- **From/To:** indicates the query time.
- **Address:** If you select this option, the corresponding address will be displayed in the **Location** column. Only 2500 addresses can be resolved for each IP address in one day. If the address resolution number exceeds 2500, the corresponding address will not be displayed, but the latitude and longitude will be still displayed.
- **Ignore drift:** Data with serious drift will be filtered when you play the trace.

### 6.1 Event Report

1. On the main interface, choose **Reports**.
2. On the **Reports** window that is displayed, select **Event report** from **Use Normal**. The **Event report** window is displayed.
3. Select a tracker and an event, set the query time, and click . The results will be displayed, as shown in the following figure.

Tracker name	Alarm type	GPS time	Receiving time	GPS valid	Loca	Speed	Latitude	Longitude
Alex	ACC On	2015-07-28 15:08:48	2015-07-28 15:08:50	Valid		0.00	-4.805018	11.861100
Alex	ACC On	2015-07-29 00:36:29	2015-07-29 00:36:31	Valid		6.00	-4.805116	11.861151
Alex	ACC On	2015-07-29 15:10:01	2015-07-29 15:10:04	Valid		17.00	-4.805255	11.861146
Alex	ACC On	2015-07-30 00:37:05	2015-07-30 00:37:09	Valid		0.00	-4.805225	11.861025
Alex	ACC On	2015-07-30 15:06:57	2015-07-30 15:10:24	Valid		0.00	-4.805058	11.861065
Alex	ACC On	2015-07-30 15:27:05	2015-07-30 15:30:32	Valid		5.00	-4.805086	11.861118
Alex	ACC On	2015-07-30 17:04:11	2015-07-30 17:07:38	Valid		0.00	-4.805063	11.861020
Alex	ACC On	2015-07-30 21:32:54	2015-07-30 21:36:19	Valid		2.00	-4.805090	11.861131
Alex	ACC On	2015-07-30 21:55:45	2015-07-30 21:59:11	Valid		2.00	-4.805110	11.861116
Alex	ACC On	2015-07-30 22:54:37	2015-07-30 22:58:02	Valid		0.00	-4.815891	11.882165
Alex	ACC On	2015-07-30 23:28:43	2015-07-30 23:32:08	Valid		0.00	-4.805110	11.861140
Alex	ACC On	2015-07-31 00:16:30	2015-07-31 00:19:54	Valid		0.00	-4.805095	11.861015
Alex	ACC On	2015-07-31 15:50:19	2015-07-31 15:53:38	Valid		0.00	-4.805233	11.861023
Alex	ACC On	2015-07-31 16:15:22	2015-07-31 16:18:41	Valid		0.00	-4.805195	11.861016
Alex	ACC On	2015-07-31 19:59:40	2015-07-31 19:59:42	Valid		0.00	-4.805246	11.860916
Alex	ACC On	2015-07-31 21:11:37	2015-07-31 21:11:40	Valid		0.00	-4.815350	11.881085

### 6.2 Event Statistics

1. On the **Reports** window, select **Event statistics** from **Use Normal**. The **Event statistics** window is displayed.
2. Select a tracker and an event, set the query time, and click . The results will be displayed, as shown in the following figure.

Event statistics			
Event:	Please select ever	Quick time	List
From:	2015-07-24	00:00	To: 2015-08-05 23:59
Enter tracker/user name to be queried			
Event name	Number of times	Percentage	
Turn On Alarm	6	2.3%	
GPS Antenna Cut	6	2.3%	
Heartbeat	173	66.8%	
Exit Sleep	4	1.5%	
SOS Button Active	1	0.4%	
Enter Sleep	5	1.9%	
Current Location	2	0.8%	
ACC On	27	10.4%	
ACC Off	27	10.4%	
External Battery On	3	1.2%	
External Battery Cut	4	1.5%	
Low Battery	1	0.4%	

### 6.3 Historical Data

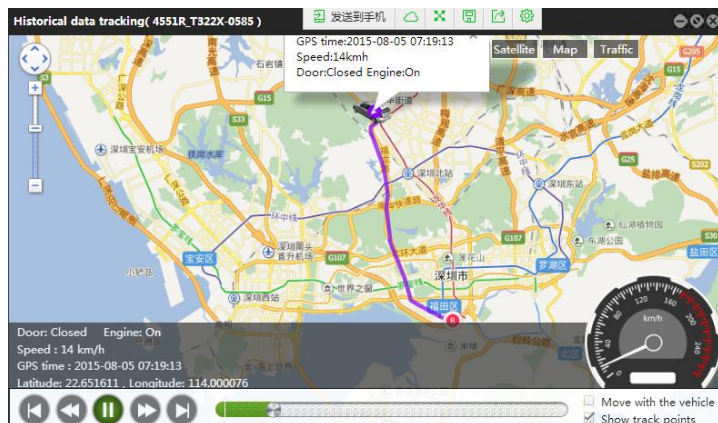
A historical data report includes regularly uploaded device data. You can query these historical data to check device status in a specific time period. This facilitates troubleshooting. (Historical data within the recent two months will be retained. Data before two months will be cleared periodically.)

On the **Reports** window, select **Historical data** from **Use Normal**. The **Historical data** window is displayed.

Select a tracker, set the query time, and click . The results will be displayed, as shown in the following figure.

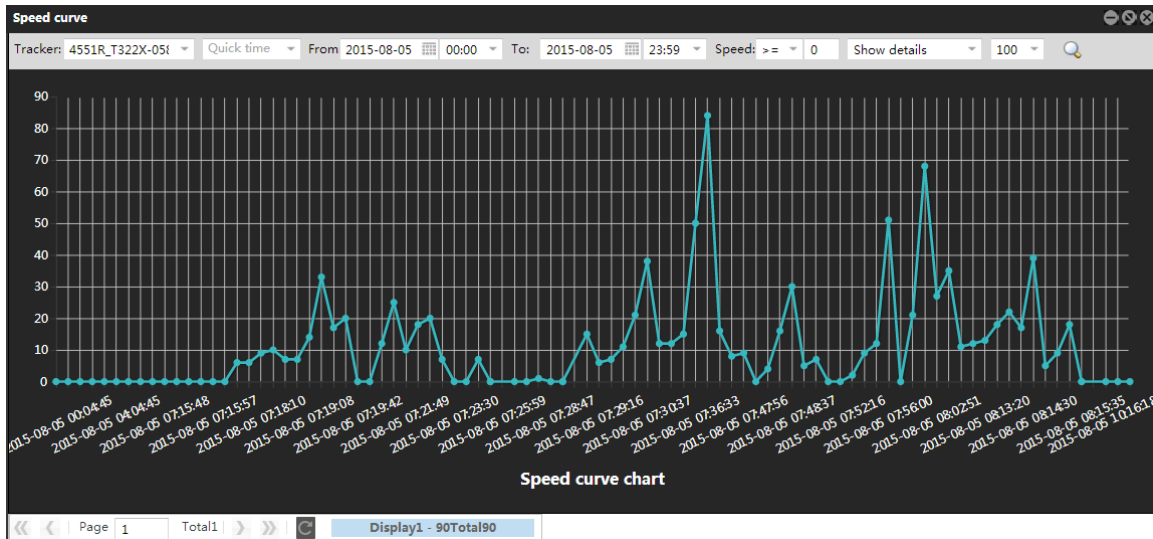
If you want to view the historical trace, click .

Historical data										
Today	From	2015-08-05	00:00	To:	2015-08-05	23:59	Speed: >=	0	Address	Ignore drift
Enter tracker/user name to be queried										
Tracker name	GPS time	Receiving time	GPS valid	Speed	Latitude	Longitude	Location	Alarm type		
4551R_T322X-0...	2015-08-05 00:0...	2015-08-05 00:0...	Invalid	0	22.6519...	114.0021...		Heartbeat		
4551R_T322X-0...	2015-08-05 01:0...	2015-08-05 01:0...	Invalid	0	22.6519...	114.0021...		Heartbeat		
4551R_T322X-0...	2015-08-05 02:0...	2015-08-05 02:0...	Invalid	0	22.6519...	114.0021...		Heartbeat		
4551R_T322X-0...	2015-08-05 03:0...	2015-08-05 03:0...	Invalid	0	22.6519...	114.0021...		Heartbeat		
4551R_T322X-0...	2015-08-05 04:0...	2015-08-05 04:0...	Invalid	0	22.6519...	114.0021...		Heartbeat		
4551R_T322X-0...	2015-08-05 05:0...	2015-08-05 05:0...	Invalid	0	22.6519...	114.0021...		Heartbeat		
4551R_T322X-0...	2015-08-05 06:0...	2015-08-05 06:0...	Invalid	0	22.6519...	114.0021...		Heartbeat		
4551R_T322X-0...	2015-08-05 07:0...	2015-08-05 07:0...	Invalid	0	22.6519...	114.0021...		Heartbeat		
4551R_T322X-0...	2015-08-05 07:1...	2015-08-05 07:1...	Invalid	0	22.6519...	114.0021...		Enter GPS Blind S...		
4551R_T322X-0...	2015-08-05 07:1...	2015-08-05 07:1...	Invalid	0	22.6519...	114.0021...		Enter geo-fence		
4551R_T322X-0...	2015-08-05 07:1...	2015-08-05 07:1...	Invalid	0	22.6519...	114.0021...		Input 2 Inactive		
4551R_T322X-0...	2015-08-05 07:1...	2015-08-05 07:1...	Invalid	0	22.6519...	114.0021...		Enter geo-fence		
4551R_T322X-0...	2015-08-05 07:1...	2015-08-05 07:1...	Valid	0	22.6519...	114.0022...		Exit GPS Blind Spot		
4551R_T322X-0...	2015-08-05 07:1...	2015-08-05 07:1...	Valid	0	22.6519...	114.0023...		Input 3 Inactive		



## 6.4 Speed Curve Chart

1. On the **Reports** window, select **Speed curve** from **Use Normal**. The **Speed curve** window is displayed.
2. Select a tracker, set the query time, select **>=** or **<=** from the **Speed** drop-down list, set the speed, and click . The results will be displayed, as shown in the following figure.

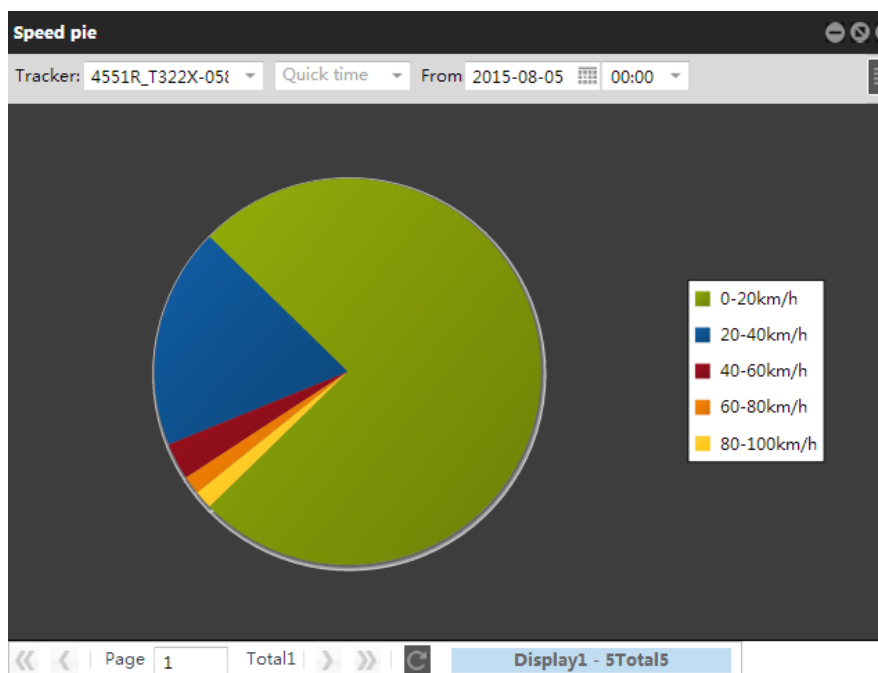


## 6.5 Speed Pie Chart

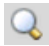
The pie chart will display the driving speed proportionally. The function shows drivers' driving habits and monitor drivers' speed.

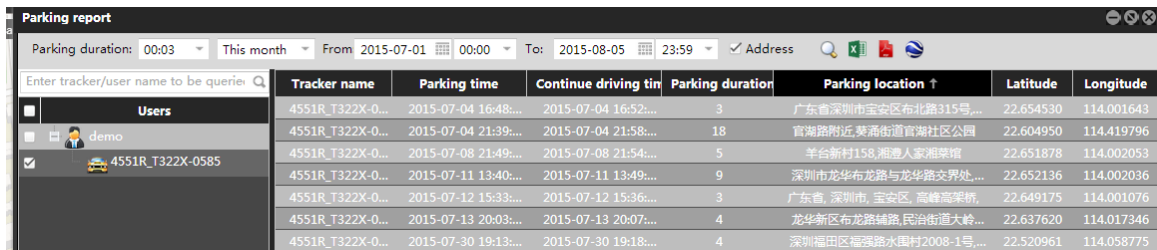
On the **Reports** window, select **Speed pie** from **Use Normal**. The **Speed pie** window is displayed.

Select a tracker, set the query time, and click . The results will be displayed, as shown in the following figure.



## 6.6 Parking Report

1. On the **Reports** window, select **Parking report** from **Use Normal**. The **Parking report** window is displayed.
2. Select a tracker, set the parking duration and query time, and click . The results will be displayed, as shown in the following figure.



Tracker name	Parking time	Continue driving tin	Parking duration	Parking location ↑	Latitude	Longitude
4551R_T322X-0...	2015-07-04 16:48:...	2015-07-04 16:52:...	3	广东省深圳市宝安区布北路315号...	22.654530	114.001643
4551R_T322X-0...	2015-07-04 21:39:...	2015-07-04 21:58:...	18	官湖路附近,葵涌街道官湖社区公园	22.604950	114.419796
4551R_T322X-0...	2015-07-08 21:49:...	2015-07-08 21:54:...	5	羊台新村158,湘潭人家湘菜馆	22.651878	114.002053
4551R_T322X-0...	2015-07-11 13:40:...	2015-07-11 13:49:...	9	深圳市龙华布龙路与龙华路交界处,...	22.652136	114.002036
4551R_T322X-0...	2015-07-12 15:33:...	2015-07-12 15:36:...	3	广东省, 深圳市, 宝安区, 高岭高架桥,	22.649175	114.001076
4551R_T322X-0...	2015-07-13 20:03:...	2015-07-13 20:07:...	4	龙华新区布龙路辅路,民治街道大岭...	22.637620	114.017346
4551R_T322X-0...	2015-07-30 19:13:...	2015-07-30 19:18:...	4	深圳福田区福强路水围村2008-1号,...	22.520961	114.058775


**Parking duration:** The unit is minute. For example, **00:45** indicates 45 minutes, and **01:23** indicates 1 hour and 23 minutes. When the parking duration exceeds the preset value and the driving speed is lower than 5 km/h, the vehicle is considered to be in parking mode. The minimum parking duration is 3 minutes.

Note: When no I/O port is connected, you can view the parking report. If you want to get more accurate data, view the I/O status report. For details, see the section 6.11 "I/O Status Report."

## 6.7 Travel Report

The travel report is used to calculate the mileage.

On the **Reports** window, select **Travel report** from **Use Normal**. The **Travel report** window is displayed.

Select a tracker, set the query time, and click . The results will be displayed, as shown in the following figure.

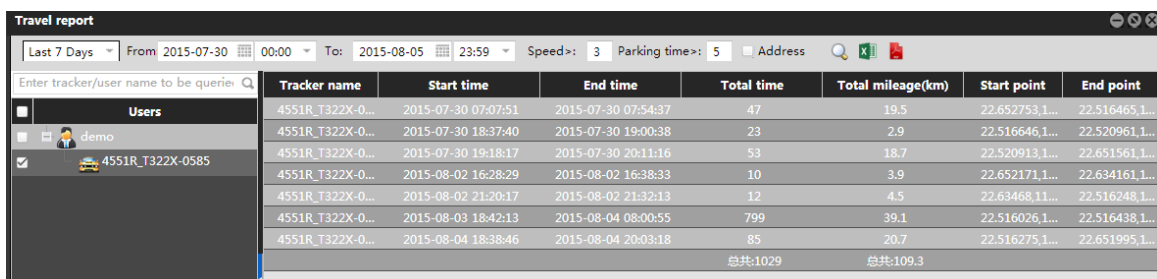
**Speed>:** When the driving speed exceeds the preset value, the tracker confirms that the car is moving.

**Parking time>:** When the parking time exceeds the preset value, the tracker confirms that the car is in parking mode.

For example: Set **Speed>** to **10** and **Parking time>** to **15**.

When the driving speed exceeds 10 km/h for over 3 minutes, the tracker confirms that the car is moving.

When the driving speed is lower than 10 km/h and the parking time exceeds 15 minutes, the tracker confirms that the car stops moving.



Tracker name	Start time	End time	Total time	Total mileage(km)	Start point	End point
4551R_T322X-0...	2015-07-30 07:07:51	2015-07-30 07:54:37	47	19.5	22.652753,1...	22.516465,1...
4551R_T322X-0...	2015-07-30 18:37:40	2015-07-30 19:00:38	23	2.9	22.516646,1...	22.520961,1...
4551R_T322X-0...	2015-07-30 19:18:17	2015-07-30 20:11:16	53	18.7	22.520913,1...	22.651561,1...
4551R_T322X-0...	2015-08-02 16:28:29	2015-08-02 16:38:33	10	3.9	22.652171,1...	22.634161,1...
4551R_T322X-0...	2015-08-02 21:20:17	2015-08-02 21:32:13	12	4.5	22.63468,11...	22.516248,1...
4551R_T322X-0...	2015-08-03 18:42:13	2015-08-04 08:00:55	799	39.1	22.516026,1...	22.516438,1...
4551R_T322X-0...	2015-08-04 18:38:46	2015-08-04 20:03:18	85	20.7	22.516275,1...	22.651995,1...
			总共:1029	总共:109.3		

Note: When no I/O port is connected, you can view the travel report. If you want to get more accurate data, view the I/O status report. For details, see the section 6.11 "I/O Status Report."

## 6.8 Mileage Statistics

On the **Reports** window, select **Mileage statistics** from **Use Normal**. The **Mileage statistics** window is displayed.

Select a tracker, set the query time, select **List** or **Chart**, and click . The results will be displayed, as shown in the following figure.

Figure 1: Displayed by list

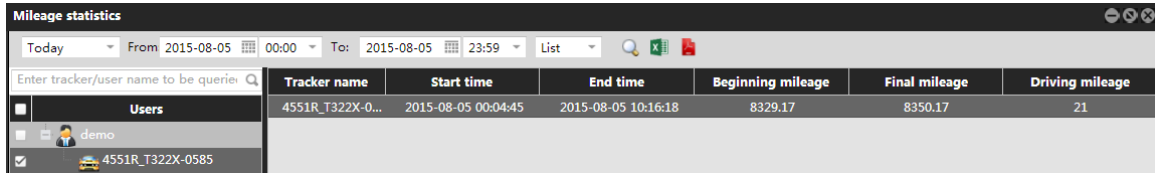
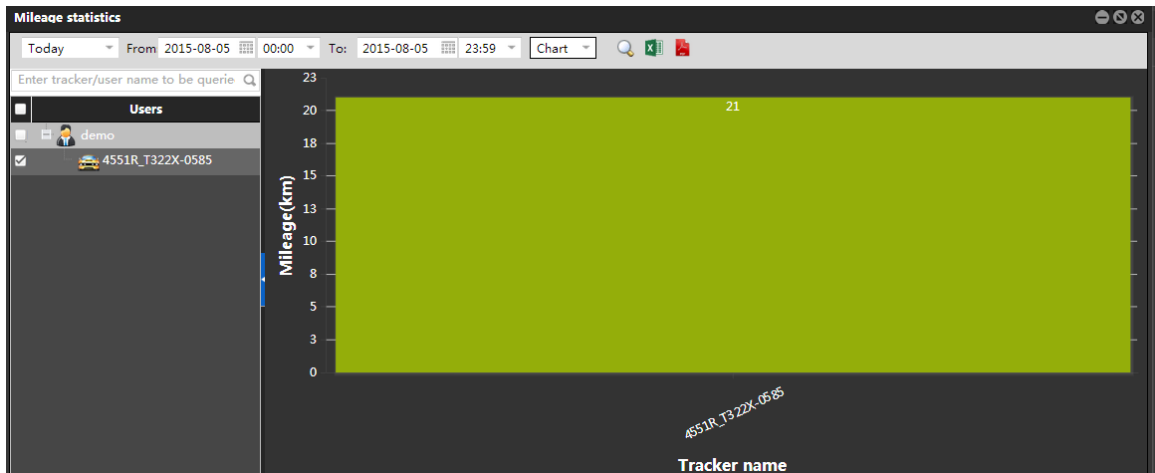


Figure 2: Displayed by chart

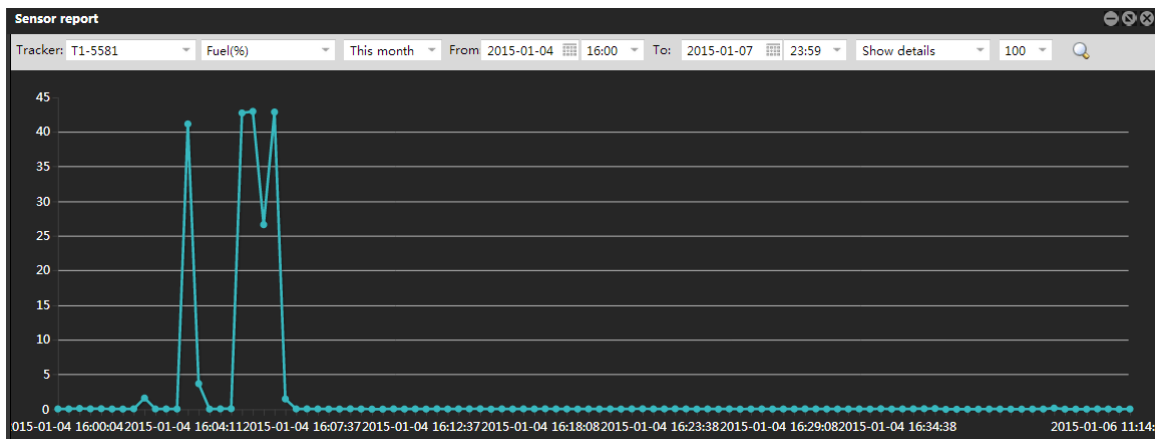


## 6.9 Sensor Report

On the **Reports** window, select **Sensor report** from **Use Normal**. The **Sensor report** window is displayed.

Select a tracker and sensor, set the query time, and click . The results will be displayed, as shown in the following figure.

After you customize a sensor (see section 5.2.3), the sensor report can display AD analog data by chart. For example, select a tracker and customization name to query the remaining fuel.



### 6.10 Average Analog

Check the average analog of a sensor during a specific time period.

On the **Reports** window, select **Sensor average** from **Use Normal**. The **Sensor average** window is displayed.

Select a tracker, set the query time, and click . The results will be displayed, as shown in the following figure.

Tracker name	Sensor name	Average
T333		34.44
T333		34.26
T333		27.30
T333	ww	25.60

### 6.11 I/O Status Report

Query the parking time, parking location, driving time, mileage and ACC on/off time. Before using the function, input or output ports must be connected.

To view the driving time and mileage, perform the following operations:

Select **T1A\_7208**, **Input 3 (All)**, and **Active->Inactive**, set the query time, and click . The results will be displayed, as shown in the following figure.

Tracker name	Input	Active Time	Inactive Time	Active Adc	Inactive A	Duration (minute)	Mileage(km)
T1A_7208	Input3(All)	2015-07-09 15:35:35	2015-07-09 15:36:16			1	0.00
T1A_7208	Input3(All)	2015-07-09 15:36:17	2015-08-07 10:04:46			41428	0.00
T1A_7208	Input3(All)	2015-08-07 10:14:40	2015-08-07 10:24:24			10	0.00

To view the parking time, perform the following operations:

Select **T1A\_7208**, **Input 3 (All)**, and **Inactive->Active**, set the query time, and click . The results will be displayed, as shown in the following figure.

**I/O status report**

Input3(All) Inactive->Acti Quick time From: 2015-07-02 00:00 To: 2015-08-17 23:59 Address

Enter tracker/user name to be queried

Tracker name	Input	Inactive Time	Active Time	Inactive A	Active Ad	Duration (minute)	Mileage(km)
T1A_7208	Input3(All)	2015-07-09 15:35:35	2015-07-09 15:36:16			1	0.00
T1A_7208	Input3(All)	2015-07-09 15:36:16	2015-07-09 15:36:17			0	0.00
T1A_7208	Input3(All)	2015-07-09 15:36:17	2015-08-07 10:04:45			41428	0.00
T1A_7208	Input3(All)	2015-08-07 10:04:46	2015-08-07 10:14:40			10	0.00

**Users**

- kyle
  - MT90-TEST
- owen
  - MT90 V4-0258
  - MVT800-5031
  - T1A\_7208
  - MVT340-9995
  - T1B\_7815

### 6.12 Driver I/O Status Report

The difference between the driver I/O status report and the I/O status report is the binding of drivers and trackers. On the **Driver IO status report** window, the driver's parking time, driving time, and driving mileage will be displayed after you select a driver.

**Driver IO status report**

Driver name MR.Wang Engine(4551F) On->Off From: 2015-08-05 00:00 To: 2015-08-05 23:59 Address

Driver	Tracker name	On Time	Off Time	On Address	Off Address	Driving mi	Parking dur
MR.Wang		2015-08-05 08:56:47	2015-08-05 08:58:41	22.514276,114.05666	22.514276,114.05666	0	00:01:54
MR.Wang		2015-08-05 10:03:14	2015-08-05 10:03:52	22.671521,114.034626	22.671536,114.034595	0	00:00:38
MR.Wang		2015-08-05 10:05:03	2015-08-05 10:14:02	22.671221,114.035341	22.671185,114.035406	0.013	00:08:59
MR.Wang		2015-08-05 10:18:26	2015-08-05 10:27:06	22.671188,114.035745	22.671005,114.035708	0.009	00:08:42
MR.Wang		2015-08-05 10:33:33	2015-08-05 10:36:23	22.671011,114.035548	22.67103,114.035565	0.037	00:02:48
MR.Wang		2015-08-05 10:36:46	2015-08-05 10:39:10	22.671023,114.035558	22.670986,114.035559	0	00:02:24
MR.Wang		2015-08-05 11:11:25	2015-08-05 11:11:42	22.514326,114.0568	22.514326,114.0568	0	00:00:17

Note: Set the driver and vehicle information before using the function.

### 6.13 Photo Report

The function is only available for the MVT600, T1, T333, and T3.

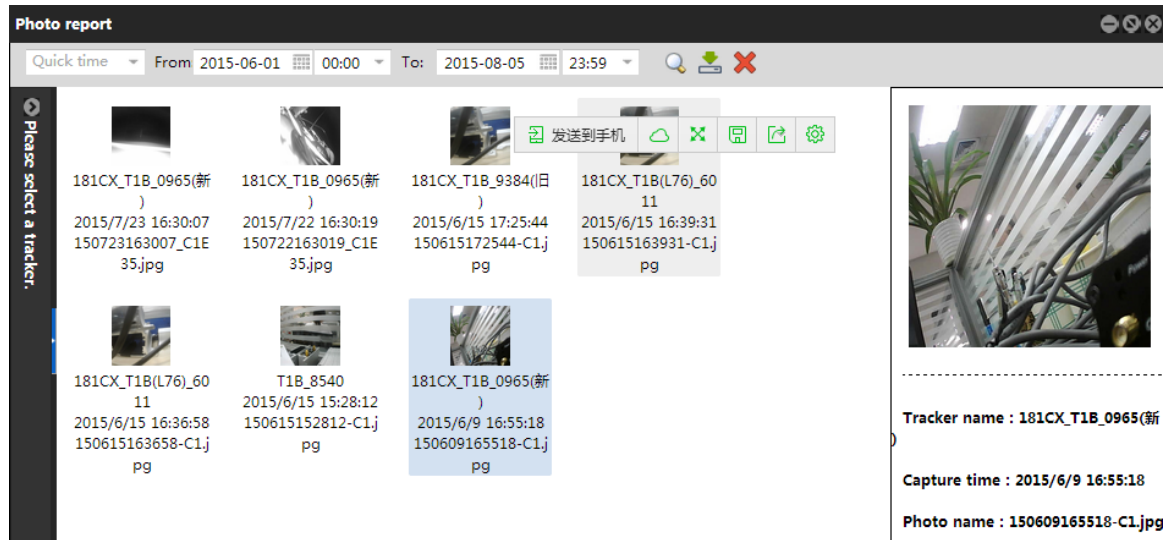
Before using the function, connect a tracker to a camera, take photos, and upload them to the platform.

On the **Reports** window, select **Photo report** from **Use Normal**. The **Photo report** window is displayed.

Select a tracker, set the query time, and click . The results will be displayed, as shown in the following figure.

If you want to download the displayed photos, click .





## 6.14 LCD Display Uploading Info

The function is only available for the MVT600, T1, T333, and T3.

To implement the function, the tracker must be used together with the A21 LCD display. With the function, you can query the information sent from the platform and uploaded by the A21 LCD display.

**Scheduling screen upload info**

This month From: 2015-07-01 00:00 To: 2015-08-05 23:59

Tracker name	GPS time	Text	Latitude ↑	Longitude	Receive/Send
T1B_8540	2015-07-30 09:16:55	1111	-	-	Receive
T1B_8540	2015-07-31 01:03:11	gj	-	-	Receive
T1B_8540	2015-07-31 01:50:41	hello	-	-	Send
T1B_8540	2015-07-31 09:41:23	119	-	-	Receive

## 6.15 User Operation Record

On the Reports window, select **User operation record** from **Use Normal**. The **User operation record** window is displayed.

Set the query time, and click . The results will be displayed, as shown in the following figure.

**User operation record**

Quick time From: 2015-08-05 00:00 To: 2015-08-05 23:59


Operation time	Operation type	Operation content
2015-08-05 11:57:...	Login	登录
2015-08-05 11:44:...	Login	登录
2015-08-05 11:41:...	Login	登录
2015-08-05 11:37:...	Login	登录
2015-08-05 11:25:...	Login	登录
2015-08-05 10:48:...	Send command	发送命令到终端 IMEI:863158021516408 命令=FC5
2015-08-05 10:33:...	Send command	发送命令到终端 IMEI:865734029480645 命令=FC5
2015-08-05 10:33:...	Send command	发送命令到终端 IMEI:865734029480645 命令=FC5
2015-08-05 09:05:...	Login	登录
2015-08-05 08:35:...	Login	登录

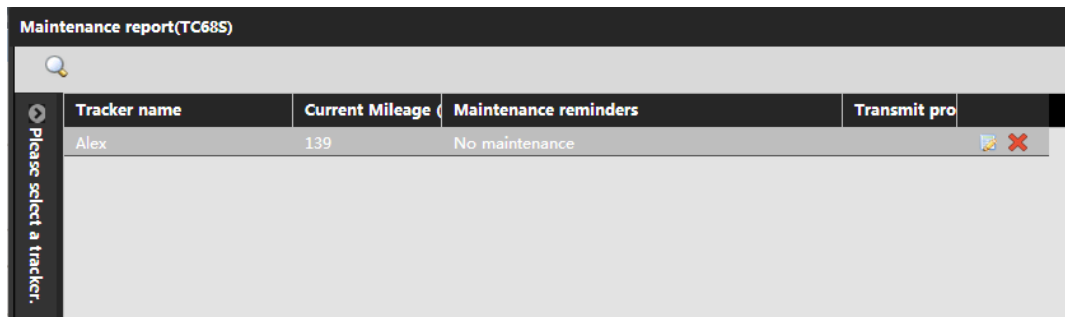
## 6.16 Vehicle Maintenance



The function is only available for TC68S.

You can modify and view the maintenance information of a vehicle.

On the **Reports** window, select **Maintenance report (TC68S)** from **Use Normal**. The **Maintenance report (TC68S)** window is displayed.

Select a tracker, and click . The results will be displayed, as shown in the following figure.

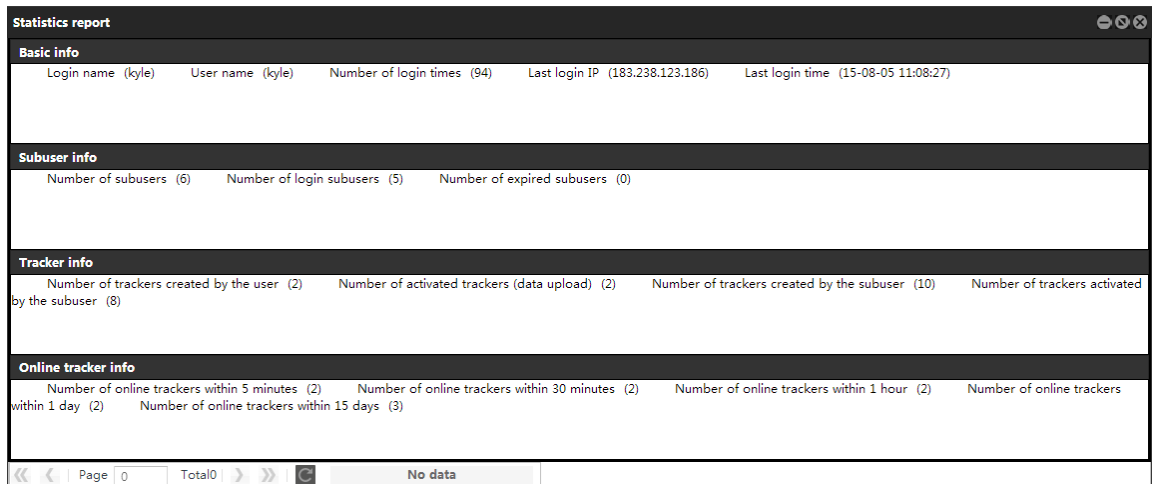


Tracker name	Current Mileage	Maintenance reminders	Transmit pro
Alex	139	No maintenance	 

Note: The maintenance information can be modified when the device is online.

## 6.17 Statistics Report

View the statistics report about user information, including the basic user information, sub-user information, tracker information, and online tracker information.




Basic info				
Login name (kyle)	User name (kyle)	Number of login times (94)	Last login IP (183.238.123.186)	Last login time (15-08-05 11:08:27)
Subuser info				
Number of subusers (6)	Number of login subusers (5)	Number of expired subusers (0)		
Tracker info				
Number of trackers created by the user (2)	Number of activated trackers (data upload) (2)	Number of trackers created by the subuser (10)	Number of trackers activated by the subuser (8)	
Online tracker info				
Number of online trackers within 5 minutes (2)	Number of online trackers within 30 minutes (2)	Number of online trackers within 1 hour (2)	Number of online trackers within 1 day (2)	
Number of online trackers within 15 days (3)				

Page 0 Total 0 No data

## 6.18 UY Transfer

On the **Reports** window, select **Transfer credit reports** from **Use Normal**. The **Transfer credit reports** window is displayed.

Select the account to be transferred and received, select a tracker, set the query time, and click . The results will be displayed, as shown in the following figure.

From	Objective type	To	Transfer time	Transfer value	login account	login IP
kyle	Tracker	369801013010007	2015-05-05 10:51:05	1	kyle	183.238.123.186

## 7 Searching

There are three functions: latitude and longitude query, route query, and POI query.

### 7.1 Latitude and Longitude Query

You can query a location by degree/minute/second format or degree format. A message replied by the device is in degree/minute/second format.

To query a location, perform the following operations:

1. On the main interface, choose **Searching**. Select **Query longitude & latitude** from **Use Normal**. The **Query longitude & latitude** window is displayed.
2. On the **Degree/minute/second query** pane, specify **Degree**, **Minute**, and **Second**. Or, on the **Decimal value query** pane, specify **Latitude** and **Longitude**.
3. Click **Search**. The latitude, longitude, and address will be displayed on the window.
4. Click **View on map**. The location will be shown in the map.

**Query longitude & latitude**

Degree/minute/second query

Latitude:  Degree:  Minute:  Second

Longitude:  Degree:  Minute:  Second

**Search**

Decimal value query

Latitude:

Longitude:

**Search**

Latitude : -37.030978

Longitude : 175.011521

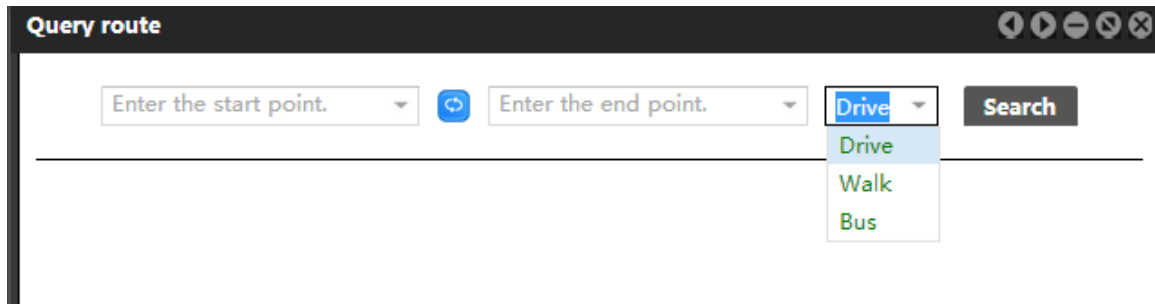
Address : , , , ,

**View on map**

### 7.2 Route Query

Select **Query route** from **Use Normal**. The **Query route** window is displayed.

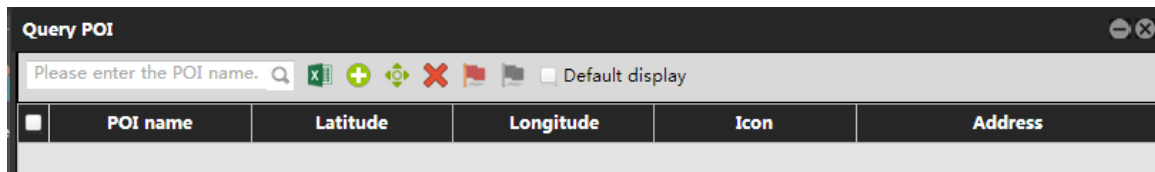
Enter the starting point and end point, select **Drive**, **Walk**, or **Bus**, and click **Search**.



### 7.3 POI Settings and Query

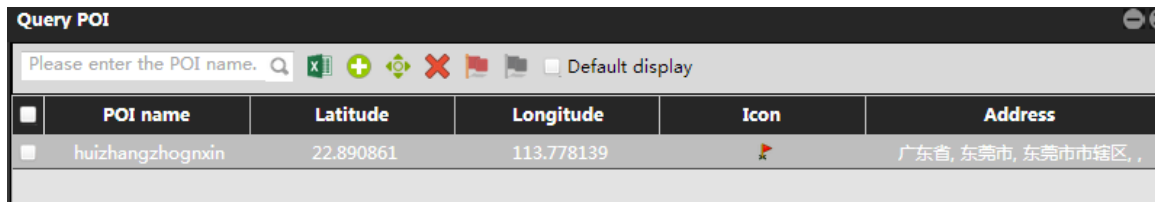
The function is used to mark POIs.

Select **Query POI** from **Use Normal**. The **Query POI** window is displayed.



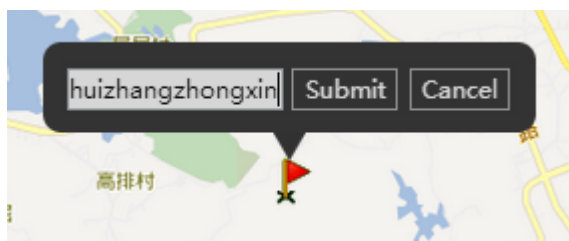
When many POI results are displayed on the **Query POI** window, use the search function to quickly find the desired result.

On the **Query POI** window, enter the POI name, and click . The results will be displayed.



To add a POI, perform the following operations:

On the **Query POI** window, click . Then select the desired place on the map. Click the place again. A dialog box will be displayed, prompting you to enter the POI name. After that, click **Submit**.



The "Add succeeded" prompt will be displayed and the POI will be marked on the map if the POI is added successfully.

Query POI					
Please enter the POI name. <input type="text"/> <input type="checkbox"/> Default display					
POI name	Latitude	Longitude	Icon	Address	
huizhangzhognxin	22.890861	113.778139		广东省, 东莞市, 东莞市市辖区, ,	

## 8 System Settings

### 8.1 Common Settings

**System settings** ⊖ ×

**Common settings** ⊞

Language:

Time zone:

Alarm sound:  Open  Close

Distance unit:  Kilometer  Mile

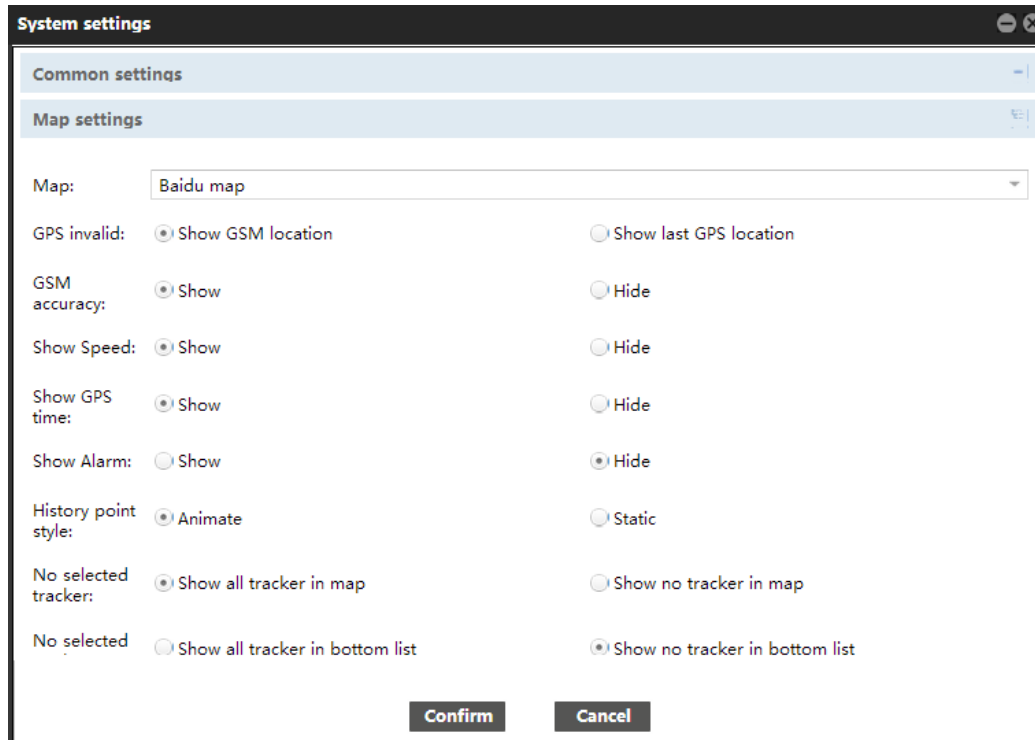
Temperature unit:  Celsius  Fahrenheit

Float panel:  Show  Hide

Animate when window open:  Open  Close

- **Language:** Support Chinese, English, and Spanish at the moment. More language versions will be available later.
- **Time zone:** Generally the time zone will be detected automatically. If it cannot be detected, set the local time zone.
- **Alarm sound:** An alarm sound will be heard at a specific interval when an alarm is generated.
- **Distance unit:** indicates the mileage unit.
- **Temperature unit:** indicates the unit of temperature showed on a temperature sensor.
- **Float panel:** indicates the panel of information sent from upper-level users to lower-level users.
- **Animate when window open:** Animation occurs when you open a window.

## 8.2 Map Settings



- **Map:** Support Baidu map and Google Maps.
- **GPS invalid:** Show the GSM base station location or the last GPS location.
- **GSM accuracy:** Whether to show the GSM base station information when no GPS signal is available.
- **Show speed:** Whether to show the tracker speed on the map.
- **Show GPS time:** Whether to show the GPS time on the map.
- **Show alarm:** Whether to show the alarm information on the map.

Figure: Show the speed and GPS time on the map



- **No selected tracker:** Whether to automatically show trackers on the map after login. (Showing all trackers on the map will slow down the network speed. If the network speed is always slow when you log in to the platform, select **Show no tracker in map.**)
- **No selected tracker:** Whether to automatically show tracker details on the lower left corner of the main interface after login.

Tracker name	Receiving time	Total travel	Run time	Location	Tracker b
T322-0007	2014-12-24 22:19:24	379.81km	4Day11:0...	福田区福田保税区桂花路5路,加福广场	3.56
T1-7208	2015-07-03 07:25:13	0.97km	0Day22:2...	福田区福田保税区桂花路5路,加福广场	3.45
MVT800-5031	2015-01-30 16:14:06	2.31km	3Day22:4...	福田区福田保税区桂花路5路,加福广场	4.14
MT90 V4-0258	2015-04-21 15:01:13	0.00km	0Day06:2...	福田区福田保税区桂花路5路,加福广场	3.92

If you have any questions, do not hesitate to email us at [info@meitrack.com](mailto:info@meitrack.com).